

## COMPOSITE-POOLS



# Pricelist 2021

Sales prices in Euro excl. VAT. Valid from 01.01. – 31.12.2021

# REKU



The REKU price list is no longer valid.  
But it can still be used with the listed price increase. The increase applies from Monday, May 10th, 2021.  
These changes are valid until revoked.

8% for swimming pools and stairs must be calculated on all REKU products.

All prices are valid for deliveries until December 31, 2021. The price guarantee until March 31, 2022 will be void too, as we have to assume that the price development will continue and the raw materials will be more expensive at the date of production.

For orders that will not be delivered until 2022 (also due to production), we have to increase 5% per product group (then it is 8% plus 5%), as it seems that the price increase continues in 2022. We kindly ask for comprehension for this extraordinary market situation, because we already now produce our articles for considerably elevated raw material prices.

CONTENT

P. 3	Colour Overall View
P. 4	Single „S“
P. 6	Twin
P. 8	Twin „S“
P. 10	Eleganz
P. 12	Roller Shutter Shafts INTEGRA
P. 13	Roller Shutter Cover
P. 14	Modena 520
P. 16	Marina
P. 18	Technical shafts
P. 20	Individual Accessories
P. 21	Individual Accessories for salt water
	Accessories Counter Current & Massage Systems
P. 22	Glass mosaic
P. 23	Our Pools
	Transport

COLOUR OVERALL VIEW



The colour of the steps can be left the same as the main pool or the step tread can be highlighted in an alternative colour to allow safer entry to the pool.

POOL COLOUR	WHITE	SEA BLUE	SAND	PAPYRUS	SILVER GREY	GRANOLITH
STEP COLOUR	White (03) Sea blue (01) Papyrus (17) Sand (11)	Sea blue (04) White (02)	Sand (13) White (12)	Papyrus (19) Silver Grey (20) White (18)	Silver Grey (22) Papyrus (19) White (18)	Granolith (40)

**NOTE:** Every surface colour loses intensity over time, due to weathering, UV radiation, Influences of water chemistry etc. This is a normal process, but it is more visible with dark colours than with light colours. These colour differences are hardly or not at all visible when the pool is full - at most in the area of the air-water edge.

When the pool is empty, however, these appear. These colour differences do not affect the life or durability of the pool in any way and they are not reason for complaint. See also DIN 16582-1 2015 Appendix D "Aesthetic aspects of one-piece GRP pools".

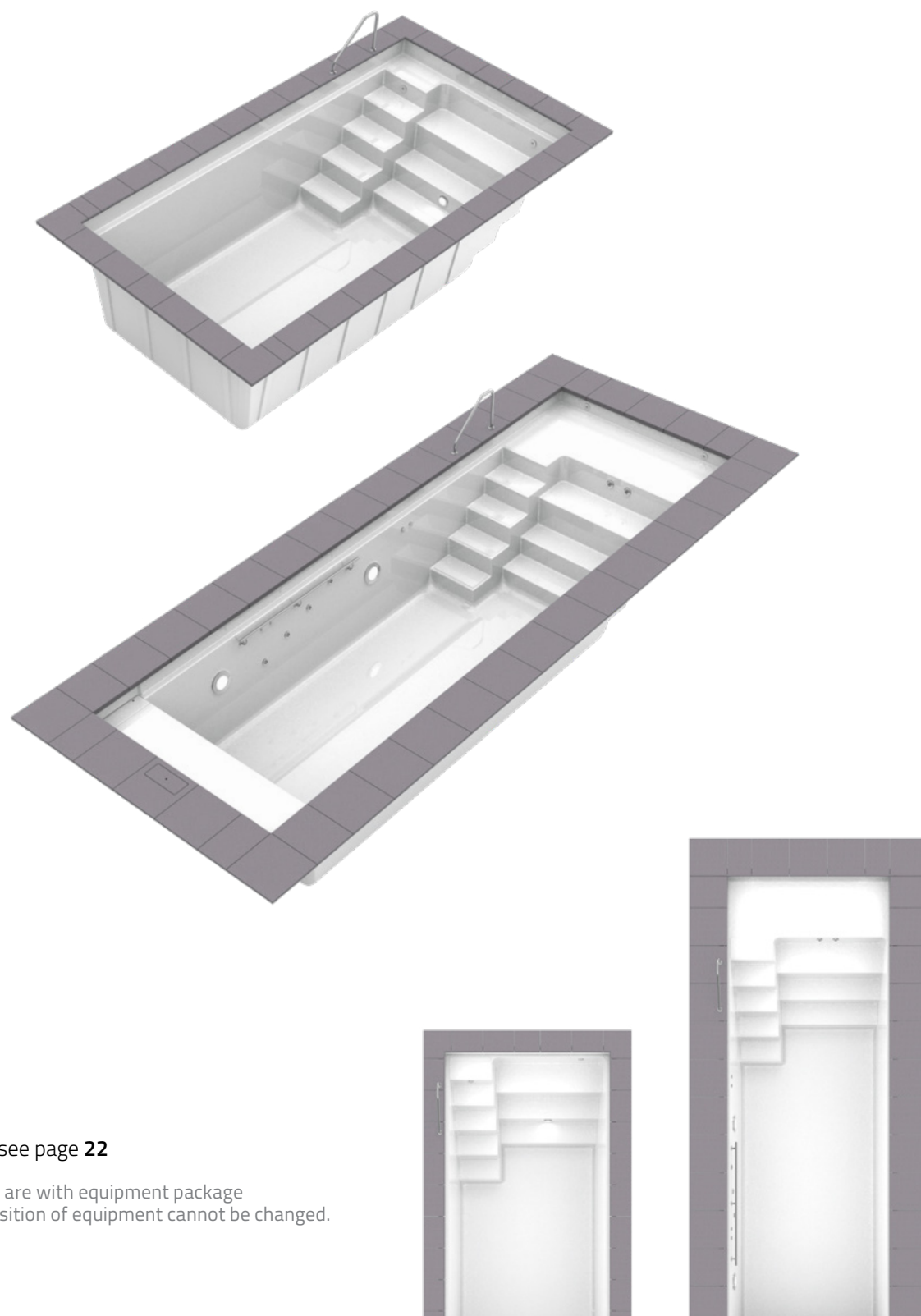


## SINGLE „S“ 550 / 700

### One-piece swimming pool made of epoxy acrylate:

5 pool steps with non-slip profiled surface on the right side of the pool with a generous seating area allowing the installation of a counter current unit and massage jets to the back wall. Pool with 6 degree wall incline and roller shutter safety ledge with integrated steel beam. Pool with 3 cm insulation in the floor and structural profiles in the side walls.

*New!*  
New Series 2,70 m wide!



Glass mosaic see page 22

All pools shown are with equipment package and options. Position of equipment cannot be changed.

### POOL TYPE:

	SINGLE „S“ 550 B SinS550ST ..	SINGLE „S“ 700 B SinS700ST ..
Dimensions in Meters	5,50 x 2,70 x 1,50 m	7,00 x 2,70 x 1,50 m
Colours: White (03)	8.815,-	9.770,-
Sea blue (04), Sand (13), Papyrus (19) and Silver Grey (20)	9.080,-	10.065,-
Granolith stonegrey (40)	10.400,-	11.525,-
Steps in a contrasting colour (see page 3)	220,-	220,-
Version „CLASSIC“ Extra charge for 2 cm insulation of the side walls	1.615,- B SinS550CL ..	1.820,- B SinS700CL ..
Glass mosaic 20 cm high above the roller shutter edge (see page 22)	1.345,-	1.591,-

**EQUIPMENT PACKAGE** Water content in m³ **16** **21**  
1 skimmer with water level controller, 2 inlet jets, 1 low level wall suction fitting, 1 bottom outlet sump with cover, 1 underwater light, LED warm White with transformer, without plastic connection box

<b>Version Metal</b> Face plates stainless steel polished (0) or White (1) per set	<b>2.298,-</b> A 3 540 50.	<b>2.298,-</b> A 3 540 50.
<b>Version Plastic</b> Face plates White (03) or Grey (22) per set	<b>1.842,-</b> A 3 540 60.	<b>1.842,-</b> A 3 540 60.

### ACCESSOIRES

<b>HANDRAIL Marina, small</b> Stainless steel, polished, per piece	<b>437,-</b> A 2 303 100.	<b>437,-</b> A 2 303 100.
<b>HANDRAIL Marina, big</b> Stainless steel, polished, per piece	<b>501,-</b> A 2 303 110.	<b>501,-</b> A 2 303 110.
<b>EQUIPMENT SHAFT laminated</b> with wood sun deck or GRP cover <u>Not available in combination with Shallow water zone</u>	<b>3.765,-</b> A 2 322 063!	<b>3.765,-</b> A 2 322 063
<b>COPING STONES Granite Grey</b> 50 x 35 x 4 cm, Stone rounded on the pool side	<b>1.378,-</b> A 3 020 226	<b>1.597,-</b> A 3 020 366
<b>COPING STONES Granite Grey, with nose</b> 60 x 60 x 6/3 cm, incl. cut out for the GRP skimmer lid	<b>2.937,-</b> A 3 025 050	<b>3.088,-</b> A 3 025 050 +2

### SHALLOW WATER ZONE „LOUNGE“

In pool colour, depth of 23 cm, full pool width with straight floor, level with the top step. This means that the shallow water zone can be completely covered by the roller shutter cover. Incl. two inlets

<b>1 Meter long for pool width 2.70 Meter</b> laminated	<b>2.060,-</b> K FWZ005ST ..	<b>2.060,-</b> K FWZ005ST ..
<b>2 underwater lights, LED White, with transformer, polished</b>	<b>1.219,-</b> A 3 202 080	<b>1.219,-</b> A 3 202 080

### UNDERGROUND ROLLER SHUTTER COVER

Integrated in the pool, extends the pool by 48 cm

– (see pages 12 - 13) –

### TRANSPORT

Transport see on page 23

Accessories see pages 20 - 21

Sales Prices in Euro excl. VAT

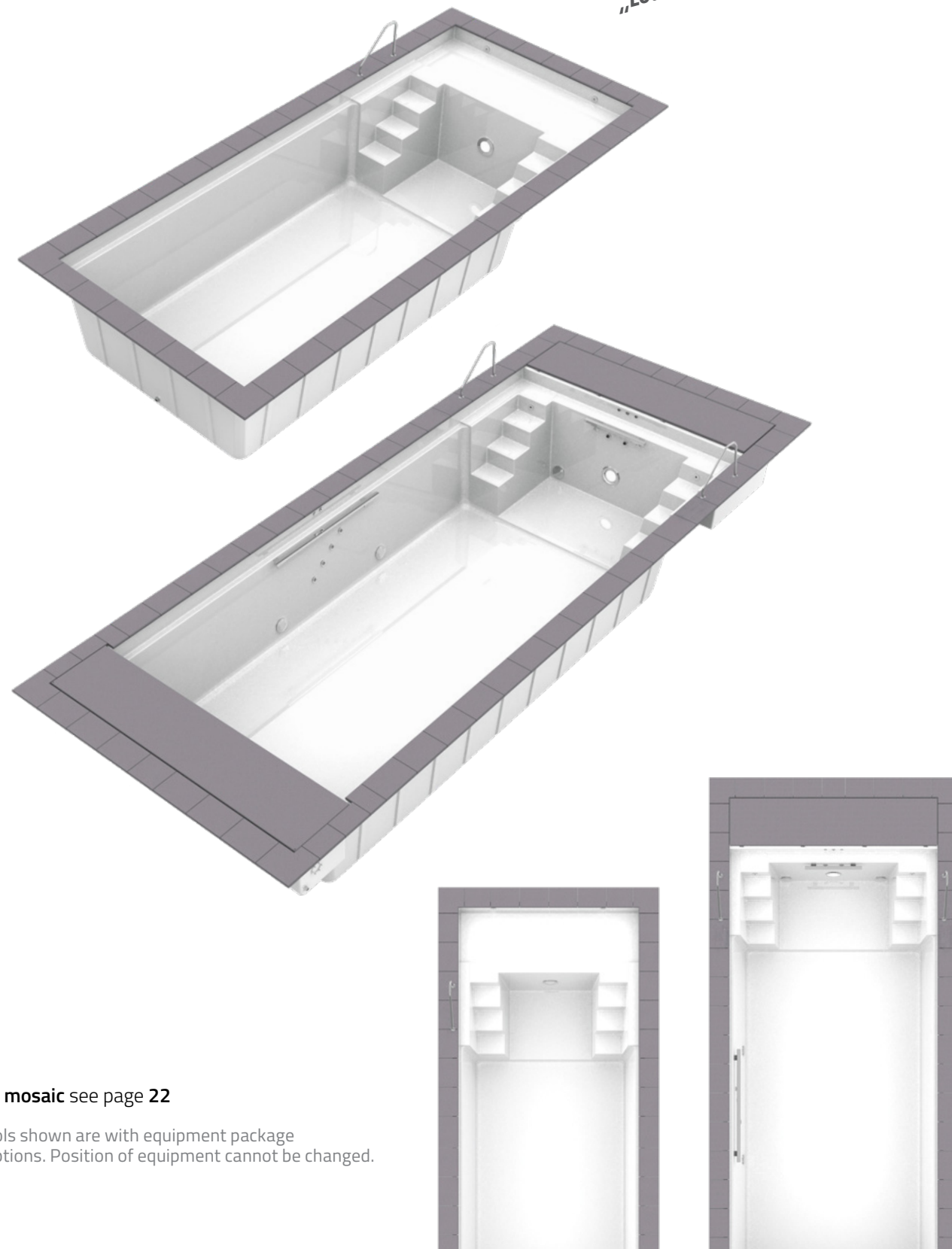
Price increase due to the negative consequences of the global pandemic

## TWIN 700 / 800 / 745 / 845 / 945

### One-piece pool made of Epoxy-Acrylate.

4 pool steps with anti-slip-profiled surface on each side of the pool with a generous central seating area allowing the installation of a counter-current unit and massage jets to the back wall. Pool with 6 degree wall incline and roller shutter safety ledge with integrated steel beam. Pool with 3 cm insulation in the floor and structural profiles in the side walls..

*New!*  
Now with shallow water zone „Lounge“ in 1 m and 2 m long.



Glass mosaic see page 22

All pools shown are with equipment package and options. Position of equipment cannot be changed.

### POOL TYPE:

	TWIN 700 B Twi700ST ..	TWIN 800 B Twi800ST ..	TWIN 745 B Twi745ST ..	TWIN 845 B Twi845ST ..	TWIN 945 B Twi945ST ..
Dimensions in Meters	7,00 x 3,20 x 1,50	8,00 x 3,20 x 1,50	7,45 x 3,70 x 1,50	8,45 x 3,70 x 1,50	9,45 x 3,70 x 1,50
Colours: White (03)	10.335,-	11.065,-	15.175,-	15.995,-	16.815,-
Sea blue (04), Sand (13), Papyrus (19) and Silver Grey (20)	10.645,-	11.395,-	15.630,-	16.475,-	17.320,-
Granolith stonegrey (40)	12.195,-	13.055,-	17.905,-	18.875,-	19.845,-
Steps in a contrasting colour (see page 3)	220,-	220,-	220,-	220,-	220,-
Version „CLASSIC“	1.895,-	2.050,-	2.050,-	2.205,-	2.360,-
Extra charge for 2 cm insulation of the side walls	B Twi700CL ..	B Twi800CL ..	B Twi745CL ..	B Twi845CL ..	B Twi945CL ..
Glass mosaic 20 cm high above the roller shutter edge (see page 22)	1.673,-	1.837,-	1.829,-	1.993,-	2.157,-

<b>EQUIPMENT PACKAGE</b> Water content in m³	26	31	34	39	44
1 skimmer with water level controller, 2 inlet jets, 1 low level wall suction fitting, 1 bottom outlet sump with cover, 1 underwater light, LED warm White with transformer, without plastic connection box					
Version Metal Face plates stainless steel polished (0) or White (1) per set	2.298,- A 3 540 50.	2.298,- A 3 540 50.	2.298,- A 3 540 50.	2.298,- A 3 540 50.	2.298,- A 3 540 50.
Version Plastic Face plates White (03) or Grey (22) per set	1.842,- A 3 540 60.	1.842,- A 3 540 60.	1.842,- A 3 540 60.	1.842,- A 3 540 60.	1.842,- A 3 540 60.

### ACCESSOIRES

HANDRAIL Marina, small Stainless Steel, polished, per piece	437,- A 2 303 100	437,- A 2 303 100	437,- A 2 303 100	437,- A 2 303 100	437,- A 2 303 100
HANDRAIL Marina, big Stainless steel, polished, per piece	501,- A 2 303 110	501,- A 2 303 110	501,- A 2 303 110	501,- A 2 303 110	501,- A 2 303 110
EQUIPMENT SHAFT laminated with wood sun deck or GRP cover. <u>Not available in combination with Shallow water zone!</u>	3.992,- A 2 322 060	3.992,- A 2 322 060	4.466,- A 2 322 062	4.466,- A 2 322 062	4.466,- A 2 322 062
COPING STONES granite Grey 50 x 35 x 4 cm, Stone rounded on the pool side	1.655,- A 3 020 376	1.798,- A 3 020 356	1.861,- A 3 022 306	1.975,- A 3 022 406	2.080,- A 3 022 506
COPING STONES granite Grey, with nose 60 x 60 x 6/3 cm, incl. cut out for the GRP skimmer lid	3.542,- A 3 025 025	3.542,- A 3 025 025	3.542,- A 3 025 120	3.693,- A 3 025 130	3.996,- A 3 025 142

### SHALLOW WATER ZONE „LOUNGE“

In pool colour, depth of 23 cm, full pool width with straight floor, level with the top step. This means that the shallow water zone can be completely covered by the roller shutter cover. Incl. two inlets.

1 Meter long laminated	2.351,- K FWZ001ST ..	2.351,- K FWZ001ST ..	2.642,- K FWZ003ST ..	2.642,- K FWZ003ST ..	2.642,- K FWZ003ST ..
2 Meter long laminated	4.436,- A 2 115 340	4.436,- A 2 115 340	5.018,- A 2 115 370	5.018,- A 2 115 370	5.018,- A 2 115 370
2 underwater lights, LED White with transformer, polished	1.219,- A 3 202 080	1.219,- A 3 202 080	1.219,- A 3 202 080	1.219,- A 3 202 080	1.219,- A 3 202 080

### UNDERGROUND ROLLER SHUTTER COVER

Integrated in the pool, extends the pool by 48 cm

– (see pages 12 - 13) –

### TRANSPORT

Transport see on page 23

Accessories see pages 20 - 21

Sales Prices in Euro excl. VAT

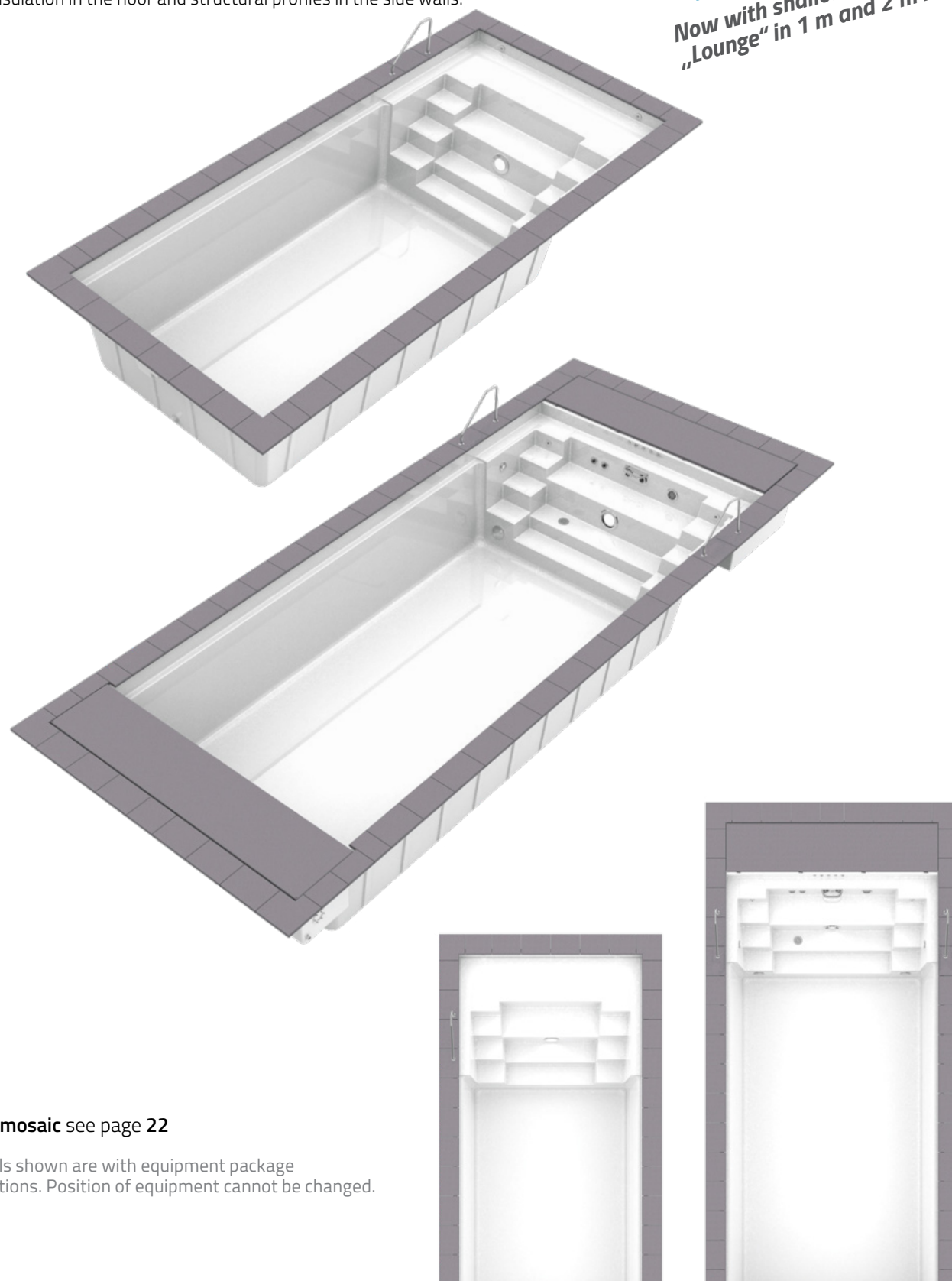
Price increase due to the negative consequences of the global pandemic

## TWIN „S“ 700 / 800 / 745 / 845 / 945

### One-piece swimming pool made of Epoxy-Acrylate

5 pool steps with anti-slip-profiled surface on each side of the pool with a generous central seating area allowing the installation of a counter-current unit and massage jets to the back wall. Pool with 6 degree wall incline and roller shutter safety ledge with integrated steel beam. Pool with 3 cm insulation in the floor and structural profiles in the side walls.

*New!*  
Now with shallow water zone „Lounge“ in 1 m and 2 m long.



Glass mosaic see page 22

All pools shown are with equipment package and options. Position of equipment cannot be changed.

### POOL TYPE:

	TWIN „S“ 700 B TwiS700ST ..	TWIN „S“ 800 B TwiS800ST ..	TWIN „S“ 745 B TwiS745ST ..	TWIN „S“ 845 B TwiS845ST ..	TWIN „S“ 945 B TwiS945ST ..
Dimensions in Meters	7,00 x 3,20 x 1,50	8,00 x 3,20 x 1,50	7,45 x 3,70 x 1,50	8,45 x 3,70 x 1,50	9,45 x 3,70 x 1,50
Colours: White (03)	10.685,-	11.415,-	15.525,-	16.345,-	17.165,-
Sea blue (04), Sand (13), Papyrus (19) and Silver Grey (20)	11.005,-	11.755,-	15.990,-	16.835,-	17.680,-
Granolith stonegrey (40)	12.610,-	13.470,-	18.320,-	19.290,-	20.260,-
Steps in a contrasting colour (see page 3)	276,-	276,-	276,-	276,-	276,-
Version „CLASSIC“	1.895,-	2.050,-	2.050,-	2.205,-	2.360,-
Extra charge for 2 cm insulation of the side walls	B Twi700CL ..	B Twi800CL ..	B Twi745CL ..	B Twi845CL ..	B Twi945CL ..
Glass mosaic 20 cm high above the roller shutter edge (see page 22)	1.673,-	1.837,-	1.829,-	1.993,-	2.157,-

EQUIPMET PACKAGE	Water content in m³	25	30	32	37	42
1 skimmer with water level controller, 2 inlet jets, 1 low level wall suction fitting, 1 bottom outlet sump with cover, 1 underwater light, LED warm White with transformer, without plastic connection box						
Version Metal Face plates stainless steel polished (0) or White (1) per set		2.298,- A 3 540 50.	2.298,- A 3 540 50.	2.298,- A 3 540 50.	2.298,- A 3 540 50.	2.298,- A 3 540 50.
Version Plastic Face plates White (03) or Grey (22) per set		1.842,- A 3 540 60.	1.842,- A 3 540 60.	1.842,- A 3 540 60.	1.842,- A 3 540 60.	1.842,- A 3 540 60.

### ACCESSOIRES

HANDRAIL Marina, small Stainless Steel, polished, per piece	437,- A 2 303 100	437,- A 2 303 100	437,- A 2 303 100	437,- A 2 303 100	437,- A 2 303 100
HANDRAIL Marina, big Stainless Steel, polished, per piece	501,- A 2 303 110	501,- A 2 303 110	501,- A 2 303 110	501,- A 2 303 110	501,- A 2 303 110
EQUIPMENT SHAFT laminated with wood sun deck or GRP cover. <u>Not available in combination with Shallow water zone!</u>	3.992,- A 2 322 060	3.992,- A 2 322 060	4.466,- A 2 322 062	4.466,- A 2 322 062	4.466,- A 2 322 062
COPING STONES granite Grey 50 x 35 x 4 cm, Stone rounded on the pool side	1.655,- A 3 020 376	1.798,- A 3 020 356	1.861,- A 3 022 306	1.975,- A 3 022 406	2.080,- A 3 022 506
COPING STONES granite Grey, with nose 60 x 60 x 6/3 cm, incl. cut out for the GRP skimmer lid	3.542,- A 3 025 025	3.542,- A 3 025 025	3.542,- A 3 025 120	3.693,- A 3 025 130	3.996,- A 3 025 142

### SHALLOW WATER ZONE „LOUNGE“

In pool colour, depth of 23 cm, full pool width with straight floor, level with the top step. This means that the shallow water zone can be completely covered by the roller shutter cover. Incl. two inlet

1 Meter long laminated	2.351,- K FWZ001ST ..	2.351,- K FWZ001ST ..	2.642,- K FWZ003ST ..	2.642,- K FWZ003ST ..	2.642,- K FWZ003ST ..
2 Meter long laminated	4.436,- A 2 115 340	4.436,- A 2 115 340	5.018,- A 2 115 370	5.018,- A 2 115 370	5.018,- A 2 115 370
2 underwater lights, LED White, with transformer, polished	1.219,- A 3 202 080	1.219,- A 3 202 080	1.219,- A 3 202 080	1.219,- A 3 202 080	1.219,- A 3 202 080

### UNDERGROUND ROLLER SHUTTER COVER

Integrated in the pool, extends the pool by 48 cm

– (see pages 12 - 13) –

### TRANSPORT

Transport see on page 23

Accessories see pages 20 - 21

Sales Prices in Euro excl. VAT

Price increase due to the negative consequences of the global pandemic



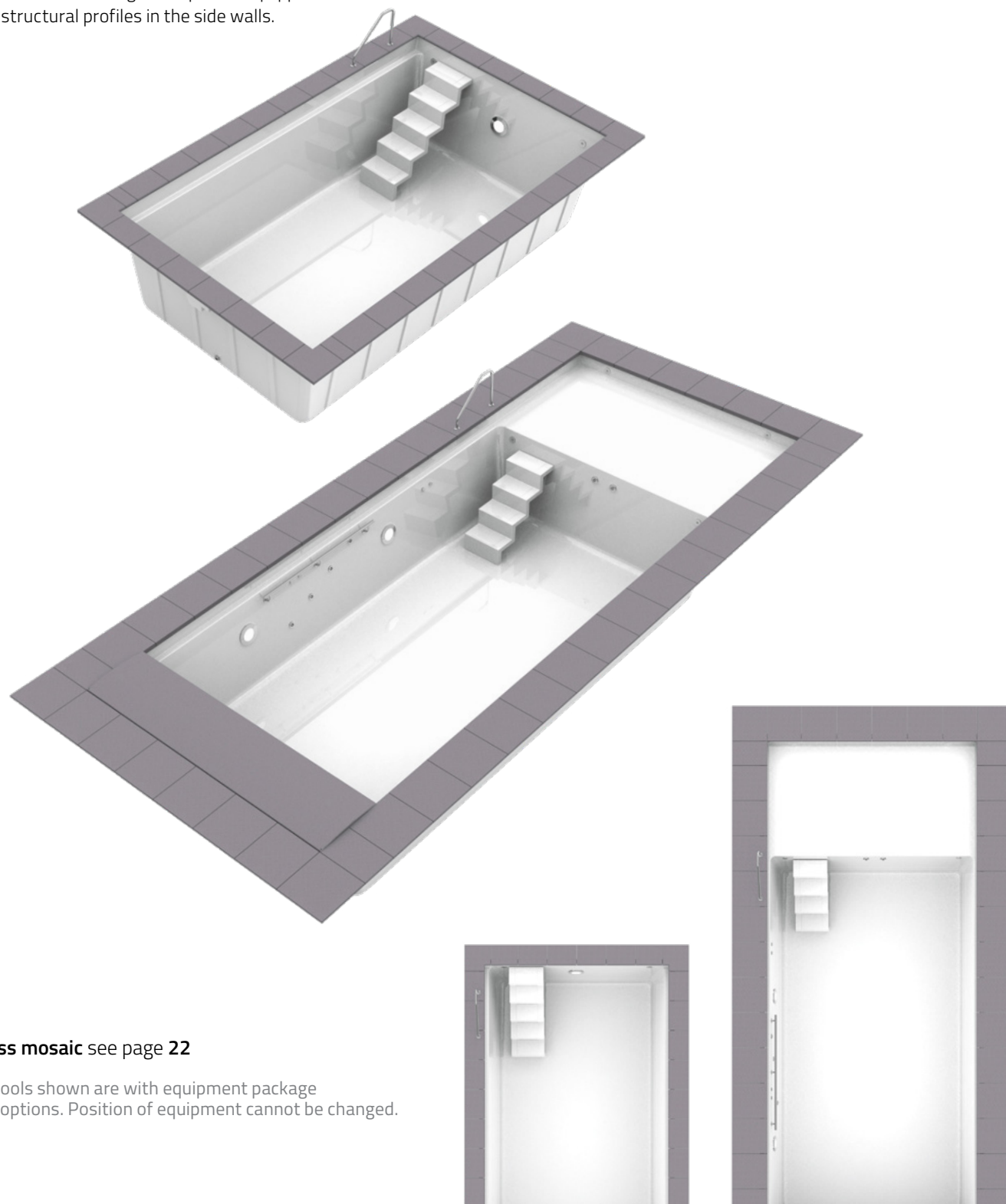
## ELEGANZ 550/650/600/700/800

### One-piece swimming pool made of epoxy acrylate

Floating 5-step Eleganz staircase, can be positioned on the left or right (please specify when ordering), mounted against the wall. In the design with the shallow water zone, the Eleganz staircase has 4 steps with a non-slip profiled surface. The area next to the stairs is suitable for the installation of a counter current unit.

A roller shutter safety ledge and an integrated steel frame are located below the roller shutter edge. The pool is equipped with 3 cm insulation in the floor and structural profiles in the side walls.

*New model!*  
Also with shallow water zone  
"Lounge" in 1 m and 2 m long.



Glass mosaic see page 22

All pools shown are with equipment package and options. Position of equipment cannot be changed.

### POOL TYPE:

	ELEGANZ 550 B Ele 550ST ..	ELEGANZ 650 B Ele 650ST ..	ELEGANZ 600 B Ele 600ST ..	ELEGANZ 700 B Ele 00ST ..	ELEGANZ 800 B Ele 800 ST ..
Dimensions in Meters	5,50 x 3,20 x 1,50	6,50 x 3,20 x 1,50	6,00 x 3,70 x 1,50	7,00 x 3,70 x 1,50	8,00 x 3,70 x 1,50
Colours: White (03)	9.300,-	10.030,-	14.140,-	14.960,-	15.780,-
Sea blue (04), Sand (13), Papyrus (19) and Silver Grey (20)	9.580,-	10.330,-	14.565,-	15.410,-	16.255,-
Granolith stonegrey (40)	10.975,-	11.835,-	16.685,-	17.655,-	18.625,-
Steps in a contrasting colour (see page 3)	160,-	160,-	160,-	160,-	160,-
Version „CLASSIC“	1.690,-	1.820,-	1.820,-	1.975,-	2.125,-
Extra charge for 2 cm insulation of the side walls	B Ele550CL ..	B Ele650CL ..	B Ele600CL ..	B Ele700CL ..	B Ele800CL ..
Glass mosaic 20 cm high above the roller shutter edge (see page 22)	1.427,-	1.591,-	1.591,-	1.755,-	1.919,-

<b>EQUIPMENT PACKAGE</b> Water content in m³	22	26	28	33	38
1 skimmer with water level controller, 2 inlet jets, 1 low level wall suction fitting, 1 bottom outlet sump with cover, 1 underwater light, LED warm White with transformer, without plastic connection box					
Version Metal Face plates stainless steel polished (0) or White (1) per set	2.298,- A 3 540 50.	2.298,- A 3 540 50.	2.298,- A 3 540 50.	2.298,- A 3 540 50.	2.298,- A 3 540 50.
Version Plastic Face plates White (03) or Grey (22) per set	1.842,- A 3 540 60.	1.842,- A 3 540 60.	1.842,- A 3 540 60.	1.842,- A 3 540 60.	1.842,- A 3 540 60.

### ACCESSOIRES

<b>HANDRAIL Marina, small</b> Stainless steel, polished, per piece	437,- A 2 303 100	437,- A 2 303 100	437,- A 2 303 100.	437,- A 2 303 100.	437,- A 2 303 100.
<b>HANDRAIL Marina, big</b> Stainless steel, polished, per piece	501,- A 2 303 110	501,- A 2 303 110	501,- A 2 303 110.	501,- A 2 303 110.	501,- A 2 303 110.
<b>COPING STONES Granite Grey</b> 50 x 35 x 4 cm, Stone rounded on the pool side	1.387,- A 3 020 226	1.597,- A 3 020 366	1.597,- A 3 020 366	1.655,- A 3 020 376	1.798,- A 3 020 356
<b>COPING STONES granite Grey, with nose</b> 60 x 60 x 6/3 cm, incl. cut out for the GRP skimmer lid	3.088,- A 3 025 000	3.088,- A 3 025 000	3.088,- A 3 025 000	3.542,- A 3 025 120	3.693,- A 3 025 130

### SHALLOW WATER ZONE „LOUNGE“

In pool colour, depth of 23 cm, full pool width with straight floor, level with the top step. This means that the shallow water zone can be completely covered by the roller shutter cover. Incl. two inlets.

<b>1 Meter long laminated</b>	2.351,- K FWZ001ST ..	2.351,- K FWZ001ST ..	2.642,- K FWZ003ST ..	2.642,- K FWZ003ST ..	2.642,- K FWZ003ST ..
<b>2 Meter long laminated</b>	4.436,- A 2 115 340	4.436,- A 2 115 340	5.018,- A 2 115 370	5.018,- A 2 115 370	5.018,- A 2 115 370
<b>2 underwater lights, LED White, with transformer, polished</b>	1.219,- A 3 202 080	1.219,- A 3 202 080	1.219,- A 3 202 080	1.219,- A 3 202 080	1.219,- A 3 202 080

### UNDERGROUND ROLLER SHUTTER COVER

Integrated in the pool, extends the pool by 48 cm

– (see pages 12 - 13) –

### TRANSPORT

Transport see on page 23

Accessories see pages 20 - 21

Sales Prices in Euro excl. VAT

Price increase due to the negative consequences of the global pandemic

## ROLLER SHUTTER SHAFTS INTEGRA

*New!*

### Roller shutter shaft Integra 2-13

integrated in the pool, with hinged seat bench in pool colour, for an extra high water level. Extends the pool by 48 cm. Incl. internal gear motor, control box and key switch

For pool width 2,70	B Int270-2-13.	8.866,-
For pool width 3,20	B Int320-2-13	9.315,-
For pool width 3,70	B Int370-2-13	9.950,-



### Roller shutter shaft Integra 3-19

integrated in the pool, with front panel in pool colour. Extends the pool by 48 cm. Incl. internal gear motor, control box and key switch

For pool width 2,70	B Int270-3-19.	8.241,-
For pool width 3,20	B Int320-3-19	8.656,-
For pool width 3,70	B Int370-3-19	9.255,-

### Shaft Covers

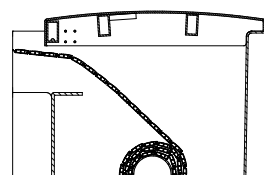
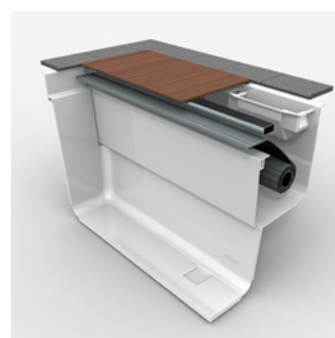
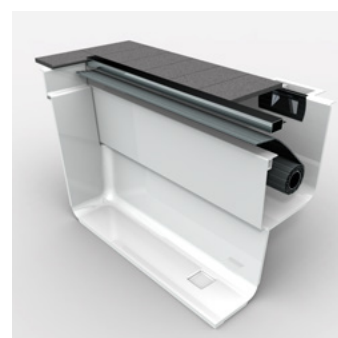
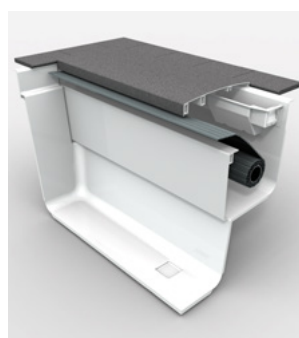
**Shaft cover made of GRP** including stone textured finish and weighted pipe cover tensioner. Available in the same colours as the swimming pools.

**Shaft cover „STONE“** Stainless steel lintel beam of 120 x 80 x 4 mm, In colour RAL 7011, with support edge for cover plates stone or wood, 4 cm thick, mounted on the pool edge. Capstones on site. Please ask for a dimensional drawing!

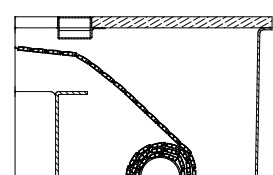
**Wood Sun Deck Integra** Shaft cover made of high-grade wood with contoured surface, stainless steel lintel beam and weighted pipe cover tensioner with 4 straps.

### Pool width

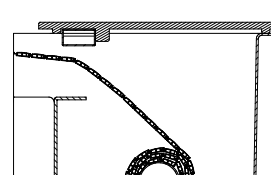
270	320	370
<b>1.039,-</b> K Int270DK2 ..	<b>1.139,-</b> K Int320DK2 ..	<b>1.239,-</b> K Int370DK2 ..
<b>1.811,-</b> SBZ0056506	<b>1.811,-</b> SBZ00560505	<b>2.008,-</b> SBZ00560502
<b>2.235,-</b> A 3 938 043	<b>2.613,-</b> A 3 938 041	<b>3.101,-</b> A 3 938 040



Integra 3-19 with cover made of GRP including stone textured finish



Integra 3-19 with stainless steel lintel beam STONE. Capstones on site!



Integra 3-19 with high-grade wood sun deck

## ROLLER SHUTTER COVER

ROLLER SHUTTER COVER MADE OF HOLLOW CHAMBER PROFILES, 6 cm, cast waterproof with end plugs

POOL TYPE:	PVC white	PVC grey	PVC solar	Polycarbonate solar	Polycarbonate solar, silver look
Single „S“ 550/270	1.630,- A 01-0120211	1.630,- A 01-0320211	2.298,- A 01-0220211	3.092,- A 01-0420211	3.555,- A 01-0520211
Single „S“ 700/270	1.937,- A 01-0120373	1.937,- A 01-0320373	2.739,- A 01-0220373	3.676,- A 01-0420373	4.227,- A 01-0520373
Twin 700/320, Twin „S“ 700/320	2.134,- A 01-0102232	2.134,- A 01-0302232	3.282,- A 01-0202232	4.361,- A 01-0402232	5.013,- A 01-0502232
Twin 800/320, Twin „S“ 800/320	2.408,- A 01-0102233	2.408,- A 01-0302233	3.664,- A 01-0202233	4.929,- A 01-0402233	5.664,- A 01-0502233
Twin 745/370, Twin „S“ 745/370	2.744,- A 01-0103232	2.744,- A 01-0303232	4.181,- A 01-0203232	5.580,- A 01-0403232	6.412,- A 01-0503232
Twin 845/370, Twin „S“ 845/370	3.042,- A 01-0103233	3.042,- A 01-0303233	4.668,- A 01-0203233	6.223,- A 01-0403233	7.151,- A 01-0503233
Twin 945/370, Twin „S“ 945/370	3.357,- A 01-0103234	3.357,- A 01-0303234	5.151,- A 01-0203234	6.861,- A 01-0403234	7.891,- A 01-0503234
Eleganz 550/320	1.651,- A 01-0102200	1.651,- A 01-0302200	2.433,- A 01-0202200	3.193,- A 01-0402200	3.676,- A 01-0502200
Eleganz 650/320	1.924,- A 01-01 02 201	1.924,- A 01-03 02 201	2.815,- A 01-02 02 201	3.761,- A 01-05 02 201	4.328,- A 01-04 02 201
Eleganz 600/370	2.149,- A 01-01 03 202	2.149,- A 01-03 03 202	3.372,- A 01-02 03 202	4.505,- A 01-04 03 202	5.181,- A 01-05 03 202
Eleganz 700/370	2.450,- A 01-01 03 203	2.450,- A 01-03 03 203	3.859,- A 01-02 03 203	5.151,- A 01-04 03 203	5.922,- A 01-05 03 203
Eleganz 800/370	2.765,- A 01-01 03 204	2.765,- A 01-03 03 204	4.341,- A 01-02 03 204	5.788,- A 01-04 03 204	6.663,- A 01-05 03 204

### ROLLER SHUTTER PROFILES FOR SHALLOW WATER ZONE

For pool width 2,70 Meter, per 1 r.m	308,- A 01-01 20 001	308,- A 01-03 20 001	439,- A 01-02 20 001	586,- A 01-04 20 001	673,- A 01-0503234
For pool width 3,20 Meter, per 1 r.m	349,- A 01-01 02 001	349,- A 01-03 02 001	468,- A 01-02 02 001	615,- A 01-04 02 001	703,- A 01-05 02 001
For pool width 3,70 Meter, per 1 r.m	352,- A 01-01 03 001	352,- A 01-03 03 001	542,- A 01-02 03 001	702,- A 01-04 03 001	791,- A 01-05 03 001

Accessories see pages 20 - 21

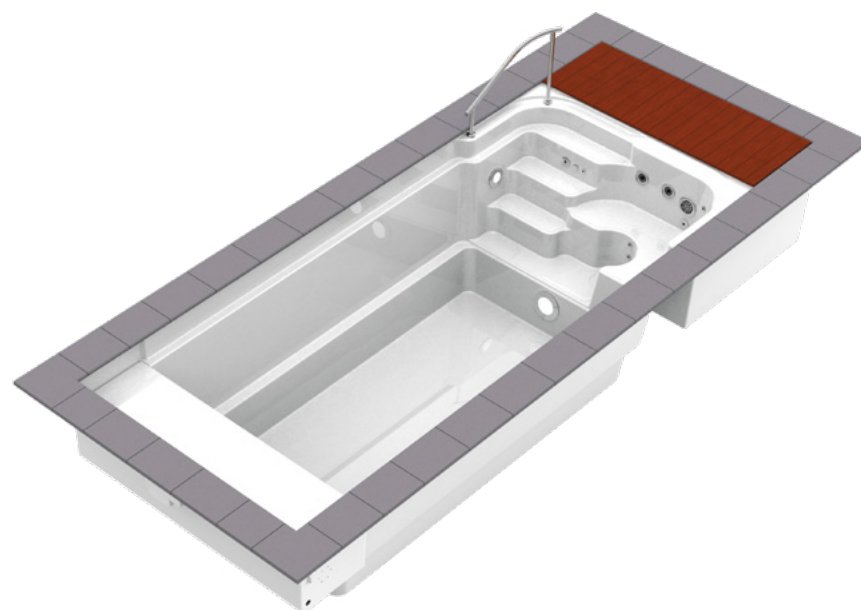
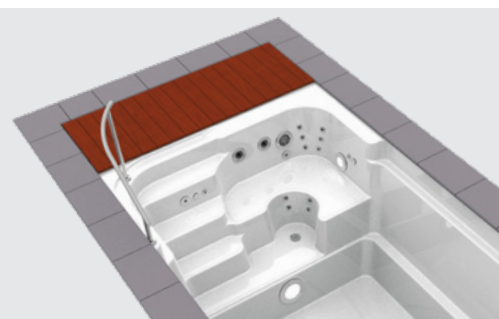
Sales Prices in Euro excl. VAT

## MODENA 520

### Modena 520 in three depths

One-piece swimming pool made of epoxy acrylate: 1.50 m, 1.25 m or 1.05 m deep. 4-step staircase with a non-slip profiled surface and a spacious seating and lounging area. 6 degree wall slope and roller shutter safety ledge with integrated steel frame. The pool is equipped with 3 cm insulation in the floor and structural profiles in the side walls. Built-in pool for stationary installation with concrete backfilling or in a self-supporting design with frame for technical support with wooden floor for all depths.

*Proven  
for years*



### ROLLER SHUTTER SHAFT INTEGRA 2-13

integrated in the pool, with hinged seat bench in pool colour, for an extra high water level. Extends the pool by 48 cm. Incl. internal gear motor, control box and key switch

For pool width 2,40 Meter

8.479,-  
B Int240-2-13

Glass mosaic see page 22

All pools shown are with equipment package and options. Position of equipment cannot be changed.

### POOL TYPE:

	MODENA 1500 B Mod520ST ..	MODENA 1250 B Mod512ST ..	MODENA 1050 B Mod510ST ..
Dimensions in Meters	5,20 x 2,40 x 1,50	5,20 x 2,40x 1,25	5,20 x 2,40 x 1,05
Colours: White (03)	8.090,-	7.475,-	6.965,-
Sea blue (04), Sand (13), Papyrus (19) and silver Grey (20)	8.335,-	7.700,-	7.175,-
Granolith stonegrey (40)	9.545,-	8.820,-	8.220,-
Steps in a contrasting colour (see page 3)	320,-	320,-	320,-
Version „CLASSIC“	1.510,-	1.280,-	1.075,-
Extra charge for 2 cm insulation of the side walls	B Mod520CL ..	B Mod512CL ..	B Mod510CL ..

Glass mosaic and shallow water zone not available for Modena 520!

EQUIPMENT PACKAGE	Water content in m³	13	11	10
1 skimmer with water level controller, 2 inlet jets, 1 low level wall suction fitting, 1 bottom outlet sump with cover, 1 underwater light, LED warm White with transformer, without plastic connection box				
Version Metal, stainless steel		2.298,-	2.298,-	2.298,-
Face Plates, polished (0) per set		A 3 540 50.	A 3 540 50.	A 3 540 50.
Version Plastic		1.842,-	1.842,-	1.842,-
Face Plates in White (03) oder Grey (22),per set		A 3 540 60.	A 3 540 60.	A 3 540 60.

### FREE-STANDING VERSION

Free-standing version, incl. frame with wooden floor for technology support (in the free-standing version, the technology shaft is not possible because the technology is installed under the stairs, accessible from the front)

9.080,-	8.725,-	8.200,-
A 2 400 700	A 2 400 710	A 2 400 720

### ACCESSOIRES

EQUIPMENT SHAFT laminated with high-grade wood	3.109,- A 2 322 061	3.109,- A 2 322 061	--
HANDRAIL stainless steel, polished, per piece	730,- A 2 322 030	730,- A 2 322 030	730,- A 2 322 030
COPING STONES Granite Grey 50 x 35 x 4 cm, Stone rounded on the pool side	1.378,- A 3 020 226	1.378,- A 3 020 226	1.378,- A 3 020 226

### ROLLER SHUTTER COVER

Made of hollow chamber profiles, 6 cm, cast waterproof with end plugs

Version PVC White	1.193,- 01-0101211	1.193,- 01-0101211	1.193,- 01-0101211
Version PVC Grey	1.193,- 01-0301211	1.193,- 01-0301211	1.193,- 01-0301211
Version PVC solar	1.748,- 01-0201211	1.748,- 01-0201211	1.748,- 01-0201211
Version Polycarbonate solar	2.399,- 01-0401211	2.399,- 01-0401211	2.399,- 01-0401211
Version Polycarbonate solar, silver look	2.765,- 01-0501211	2.765,- 01-0501211	2.765,- 01-0501211

### TRANSPORT

Transport see on page 23

Accessories see pages 20 - 21

Sales Prices in Euro excl. VAT

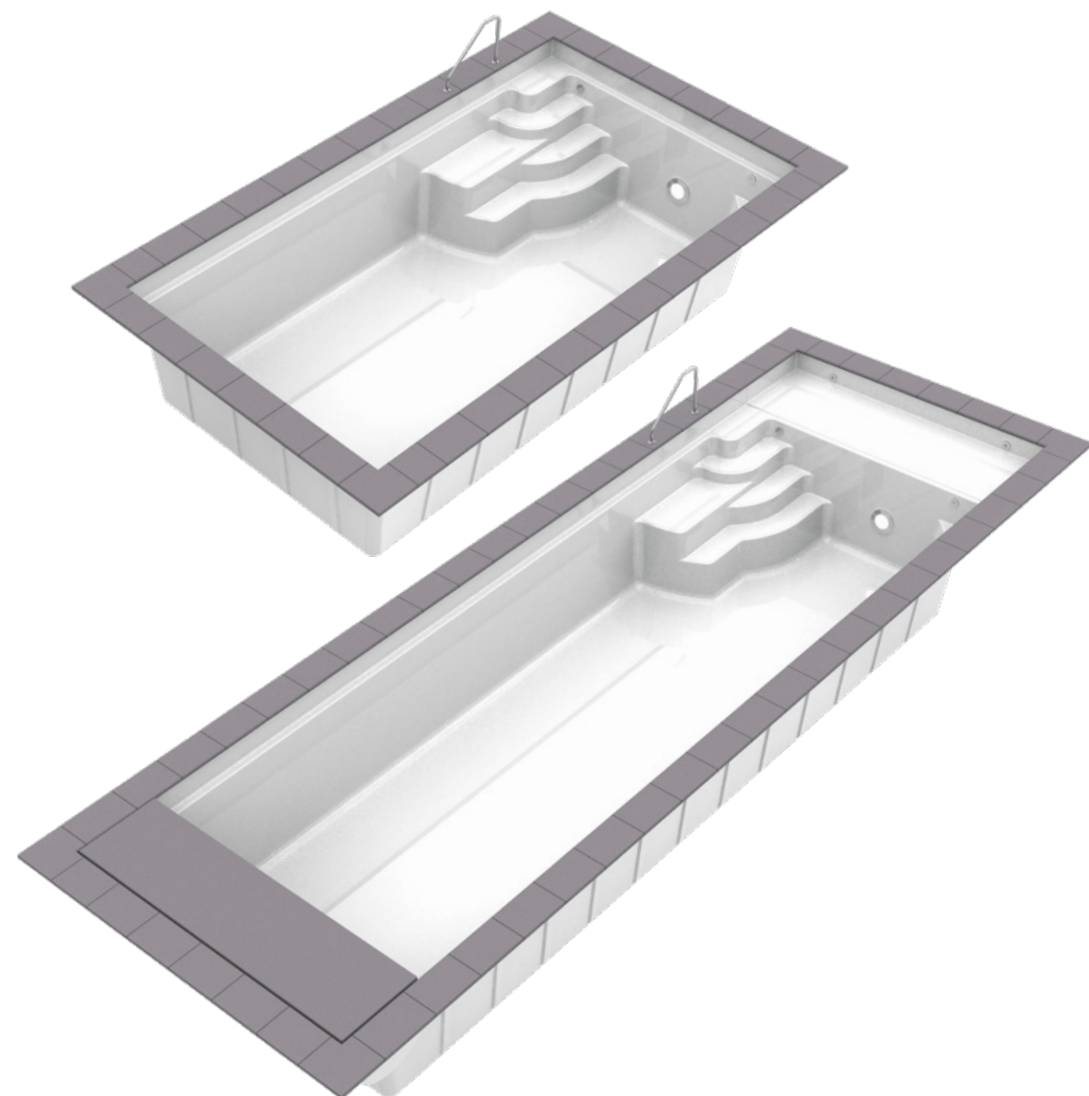
Price increase due to the negative consequences of the global pandemic



## MARINA 600 / 900

### One-piece pool made of Epoxy-Acrylate

4 pool steps with anti-slip-profiled surface in one corner of the pool, with a comfortable seat integrated into the steps. Pool with 6 degree wall incline and roller shutter safety ledge with integrated steel beam. Pool with 3 cm insulation in the floor and structural profiles in the side walls.



Now also with **SHALLOW WATER ZONE „LOUNGE“** in 1 m long.

### INTEGRA ROLLER SHUTTER INTEGRA 1-03

integrated in the pool, with a visor in pool colour, enables a high water level, completely (see above) extends the pool by 30 cm and protrudes 50 cm into the pool. Incl. internal gear motor, control box and key switch. **Shaft covers** see page 12

For pool width 3,20 Meter

8.195,-  
B Int320-1-03

Glass mosaic see page 22

All pools shown are with equipment package and options. Position of equipment cannot be changed.

*Proven  
for years*



### POOL TYPE:

	MARINA 600 B Mai600ST ..	MARINA 900 B Mai900ST ..
Dimensions in Meters	6,00 x 3,20 x 1,40 m	9,00 x 3,20 x 1,40 m
Colours: White (03)	9.200,-	11.330,-
Sea blue (04), Sand (13), Papyrus (19) and Silver Grey (20)	9.475,-	11.670,-
Steps in a contrasting colour (see page 3)	276,-	276,-
Version „CLASSIC“ Extra charge for 2 cm insulation of the side walls	1.770,- B Mai600CL ..	2.205,- B Mai900CL ..
Glass mosaic 20 cm high above the roller shutter edge (see page 22)	1.509,-	2.001,-

<b>EQUIPMENT PACKAGE</b>	Water content in m³	21	33
1 skimmer with water level controller, 2 inlet jets, 1 low level wall suction fitting, 1 bottom outlet sump with cover, 1 underwater light, LED warm White with transformer, without plastic connection box			
Version Metal Face plates stainless steel polished (0) or White (1) per set		2.298,- A 3 540 50.	2.298,- A 3 540 50.
Version Plastic Face plates White (03) or Grey (22) per set		1.842,- A 3 540 60.	1.842,- A 3 540 60.

### ACCESSOIRES

HANDRAIL Marina, small Stainless steel, polished, per piece	437,- A 2 303 100.	437,- A 2 303 100.
HANDRAIL Marina, big Stainless steel, polished, per piece	501,- A 2 303 101	501,- A 2 303 101.
COPING STONES Granite Grey 50 x 35 x 4 cm, Stone rounded on the pool side	1.378,- A 3 020 226	1.861,- A 3 022 306
COPING STONES Granite Grey, with nose 60 x 60 x 6/3 cm, incl. cut out for the GRP skimmer lid	3.088,- A 3 025 000	3.693,- A 3 025 130

### SHALLOW WATER ZONE „LOUNGE“

In pool colour, depth of 23 cm, full pool width with straight floor, level with the top step. This means that the shallow water zone can be completely covered by the roller shutter cover. Incl. two inlets

1 Meter long For pool width 3,20 meter laminated	2.351,- K FWZ001ST ..	2.351,- K FWZ001ST ..
2 underwater lights, LED White with transformer, polished	1.219,- A 3 202 080	1.219,- A 3 202 080

### ROLLER SHUTTER COVER

Made of hollow chamber profiles, 6 cm, cast waterproof with end plugs

Version PVC White	2.168,- 01-0102332	3.168,- 01-0102334
Version PVC Grey	2.168,- 01-0302332	3.168,- 01-0302334
Version PVC solar	3.168,- 01-0202332	4.597,- 01-0202334
Version Polycarbonate solar	4.202,- 01-0402332	6.080,- 01-0402334
Version Polycarbonate solar, silver look	4.752,- 01-0502332	6.903,- 01-0502334

### TRANSPORT

Transport see on page 23

Accessories see pages 20 - 21

Sales Prices in Euro excl. VAT

Price increase due to the negative consequences of the global pandemic

## TECHNICAL SHAFTS

### TECHNICAL SHAFT „UNIVERSAL“

The Universal technical shaft fits to REKU Composite pools (open at the bottom). Vent installed with fan and humidistat. The lid is adjustable in height to suit the surrounding copings stones or wooden flooring..

Dimensions (L x W x H): 1,5 x 1,7 x 1,5 m  
Dimensions of the cover opening: 1.245 x 765 mm

Drawing available on request

Price per piece K Uni 150.. **3.067,-**

#### Cover Versions

(When ordering confirm the cover type and colour required. Covers are papyrus (light Grey) as standard. Other colour options are available (see the entry steps price list for options).

1. Lid with anti-slip surface, screwed. The surface has a „non-slip certificate“ for wet areas. Opened with 2 gas struts & 2 handles.

2. Also suitable for wooden decking (on site application), but not in stone as it is frequently opened.

3. As a shower tray with the anti-slip coating, includes waste and is opened with 2 gas struts and 2 handles

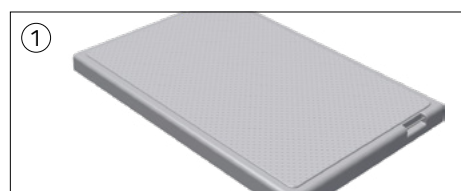
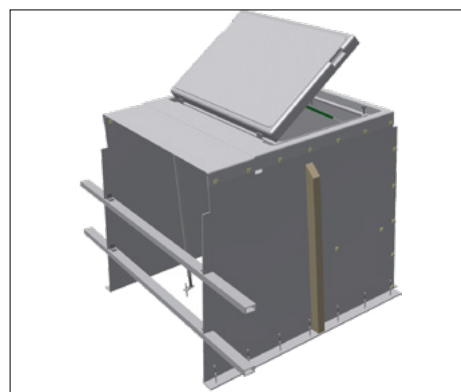
#### Extra charge for technical shaft matching the colours of covers

(Covers are papyrus (light Grey) as standard. Other colour options are available)

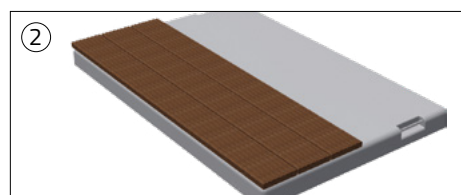
Price per piece: **108,-**

#### Cover available as a shower tray (BRW)

Price per piece: **113,-**



Cover with anti-slip surface (DK)

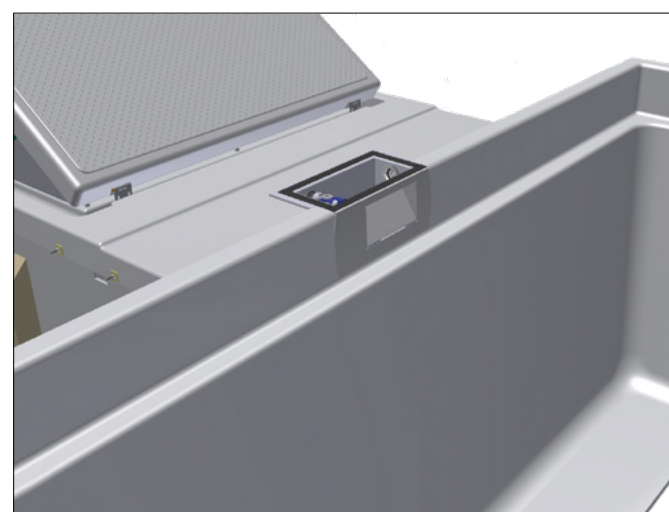


Cover for wooden surface (FLW)

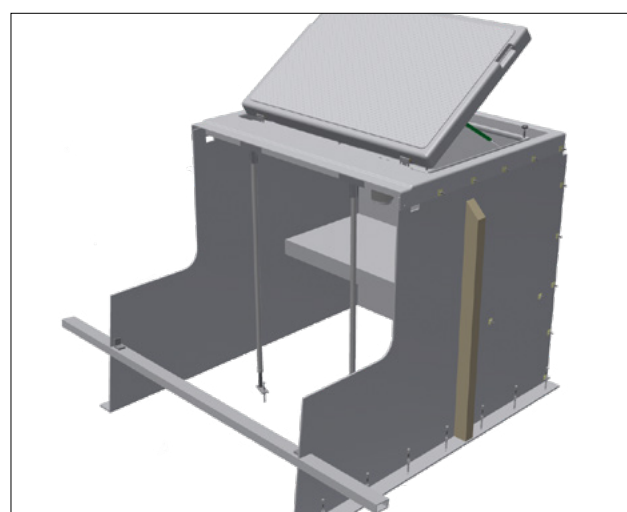


Cover as shower tray (BRW)

Sales Prices in Euro, excl. VAT



GRP - multi purpose technique shaft for swimming pools without roller shutter cover



GRP - multi purpose technique shaft for swimming pools with Integra roller shutter cover.

### SHAFT FOR COUNTER SWIM UNITS

To match the Composite pool, with waste drain, 2-4 qty adjustable leg supports for bolting to the concrete slab. Built in ventilation with fan and humidistat.

Shaft for counter swim units, short version  
for top cover with plates, incl. 2 adjustable leg supports

**Internal Dimensions (L x W x H): 1.050/1.250/1.500x 600 x 700 mm deep**

Price per piece 1050 mm long K TS720GSA1050 B 03 K **820,-**

Price per piece 1250 mm long K TS720GSA1250 B 03 K **1.070,-**

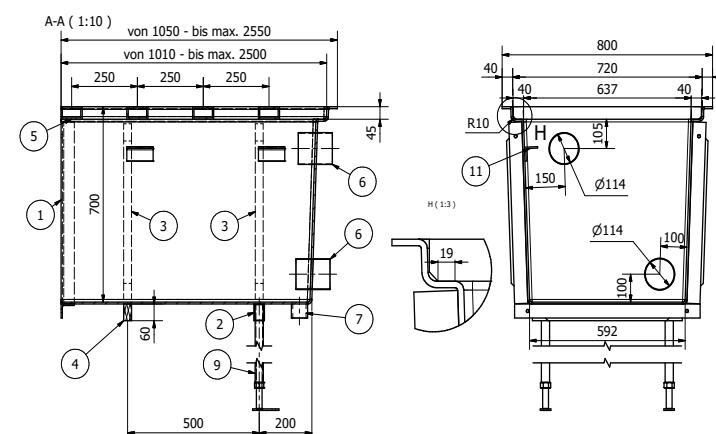
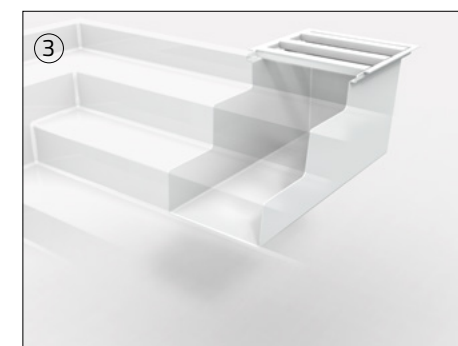
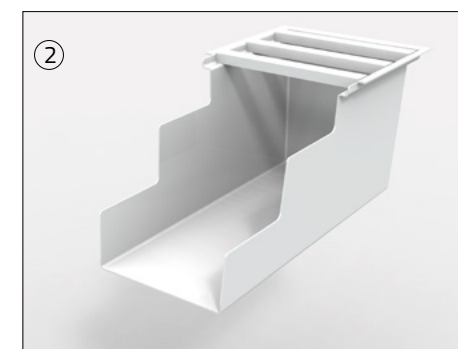
Price per piece 1500 mm long K TS720GSA1500 B 03 K **1.320,-**

Shaft for counter swim units, long version  
with cut-outs\*\* for step-ends, incl. 4 adjustable leg supports

**Internal Dimensions (L x W x H): 2015 x 600 x 700 mm deep**

Price per piece K TS720GSA2000 03 L **1.640,-**

To be able to securely attach the plates to the housing, plastic latches are supplied, these are attached at a distance of 25 cm and can be removed if necessary. A plastic plate is hung over the pump to prevent the water from dripping through. Supply and exhaust air with duct pipe Ø 90 mm on site.



\*\* The cut-outs for stairs by the long technical shaft for counter swim unit are cut out in the factory depending on the type of staircase.

Sales Prices in Euro excl. VAT

## INDIVIDUAL ACCESSORIES

<b>Skimmer GRP/V4A</b> laminated to the shell with water level regulation and security overflow and skimmer basket, White (60), polished (70) in pool colour	A 3 503 015	<b>761,-</b>
<b>Skimmer INTEGRA made of GRP</b> installed in roller shutter shaft, security overflow d 40 mm, suction plug 2", mechanical level regulator, installed in roller shutter shaft	A 3 916 070	<b>761,-</b>
<b>Pool drain with face plate</b> 1 ½", ball 4 x Ø=8 mm complete. (Qmax = 3,6 m³/h)*, Version: polished	B 3510530	<b>134,-</b>
<b>LED Underwater (Standard feature)</b>		
<b>Niche of GRP laminated</b> - for installation under the stairs (laminated GRP niche, semicircular) - on the front side or on the long side (laminated GRP niche, rectangular)	A SBZ00370300 A SBZ00370550	<b>366,-</b> <b>366,-</b>
<b>Niche of red brass,</b> with stud bolt and flange and adapter (for Ø 170 in the side wall)	L A 4 101 060	<b>366,-</b>
<b>LED underwater light,</b> 45 W, warm White, Ø 170 mm, with stainless steel faceplate	A 3 531 400	<b>303,-</b>
<b>LED underwater light,</b> 40 W, RGB, Ø 170 mm, with stainless steel faceplate	A 3 531 410	<b>429,-</b>
<b>LED underwater light,</b> 7 W, warm White, Ø 100 mm, with stainless steel faceplate	A 3 531 440	<b>176,-</b>
<b>LED underwater light,</b> 6 W, RGB, Ø 100 mm, with stainless steel faceplate	A 3 531 450	<b>252,-</b>
<b>Transformer</b> in accordance to VDE 0551, IP 64, Iso. Kl. E		
<b>Modell 50 VA</b> (1 x 50 W)	B 3 539 008	<b>134,-</b>
<b>Modell 100 VA</b> (2 x 50 W)	B 3 539 009	<b>176,-</b>
<b>Modell 150 VA</b> (3 x 50 W)	B 3 539 011	<b>193,-</b>
<b>Modell 300 VA</b> (1 x 300 od. 4 x 75 W)	B 3 539 010	<b>218,-</b>
<b>Modell 600 VA</b> (2 x 300 W)	B 3 539 020	<b>273,-</b>
<b>Control box (192 W) with remote control and DMX protocol</b> (for 1-4 UWS-RGB) for changing light colours, dimmer and various colour effects, memory function, control panel with wall bracket (remote control not waterproof)	A 3 531 480	<b>660,-</b>
<b>Control box 480 W control box with remote control and DMX protocol</b> (for 1-8 UWS-RGB) for changing light colours, dimmer and various colour effects, memory function, control panel with wall bracket (remote control not waterproof)	A 3 531 490	<b>870,-</b>
<b>Elbow for drain, red brass, R 1 ½"</b>	B 3 510 000	<b>164,-</b>
<b>Anti-swirl cover for drain</b> VA polished, suitable for drain channel in RivieraPool	B 3 512 000	<b>126,-</b>
<b>Wall low level suction BK 2", IG, (Qmax = 14,3 m³/h)*</b> stainless steel polished	B 4 230 250	<b>311,-</b>
<b>Cut outs for non REKU parts:</b> Cut with at milled rear for air venturi regulator (LR), floor drain (Ba) or eyeball inlet (Ed) up to incl. d 65 mm	A ... 001 Boh	<b>54,-</b>
cut out with at milled back for counter swim unit (GSA), Skimmer (Ski) or light (Uws), square or round under max. 400 x 400 mm	A... 001 Boh	<b>183,-</b>
Rectangular cutout for counter current unit - other manufacturer larger than 400x400 mm	A Gsa003 Boh	<b>467,-</b>
Reinforcement of the pool wall for one-piece pool for installation of the large counter current unit more than 400x400 mm	SBZ003500200	<b>543,-</b>

Necessary cut-outs for equipment package are included in the price of the equipment set!

## INDIVIDUAL ACCESSORIES - FOR SALT WATER

<b>Skimmer GRP/GRP</b> laminated to the shell with water level regulation and security overflow and skimmer basket, cover made from GRP in pool colour	A 3503015 GRP	<b>739,-</b>
<b>Eyeball inlet</b> R 1 ½", Ø4x8 mm Plastic White (Ocean 03) or Grey (Ocean 22)	Ocean.....	<b>85,-</b>
<b>LED underwater lights (standard feature)</b>		
<b>LED underwater light ZM40,</b> 44 W/12 V, warm White, in GRP-Niche Ø 141 mm with plastic faceplate Chroma in White or Grey	CCE-300-0139	<b>543,-</b>
<b>LED underwater light ZX30,</b> 40 W/12 V, RGB + W, in GRP-Niche Ø 141 mm with plastic faceplate Chroma in White or Grey	CCE-300-0108	<b>611,-</b>
<b>LED mini spotlight M12K,</b> 12W/12 V, warm White, in GRP niche Ø141 mm with plastic face plate MiniChroma in White or gray	CCE-300-0083	<b>358,-</b>
<b>LED mini spotlight X15,</b> 12W/12V, RGB, in GRP niche Ø141 mm with plastic face plate MiniChroma in White or gray	CCE-300-0098	<b>437,-</b>
<b>LED underwater light control box A100 RC+ (100 W)</b> with remote control for direct changing light colours Control of more lights available	CCE-570-0145	<b>368,-</b>
<b>Cable connecting box of plastic</b>	B 3 539 003	<b>44,-</b>
<b>Wall low level suction plastic 2",</b> White or Grey	L640-3630 CLRD641-1060-6	<b>99,-</b> <b>99,-</b>

## ACCESSORIES COUNTER CURRENT & MASSAGE SYSTEMS

<b>Royal Twinjet 1000</b> system with 2 jets, Qtotal = approx. 52 m³/h	B 3 580 167	<b>2.517,-</b>
<b>Fitting set incl. gate valve for installation in roller shutter shaft</b>		
<b>Fitting set with safety suction fittings according to DIN 16713 for installation in the pool area,</b> 2x 2 ½", suction grill Ø350 mm, Qmax = 52.7 m³/h	B 3 580 165	<b>3.269,-</b>
<b>Pump kit 2,6 kW - 400 V incl. switch box</b>	B 3 590 194	<b>2.954,-</b>
<b>Healthstream 4-22</b> system with 4 Superjets, Qtotal = ca. 38 m³/h		
<b>Safety suction fittings incl. valve to be installed inside the roller shutter cover</b>	B 3 580 150	<b>2.071,-</b>
<b>Safety suction fittings according to DIN EN 16 713 to be installed in the pool area.</b> 2 x 2 ½", suction grill Ø 350 mm, Qmax = 52,7 m³/h	B 3 580 155	<b>2.824,-</b>
<b>Pump kit 2,2 kW - 400 V, including switch box</b>	B 3 580 194	<b>2.437,-</b>
<b>Air Jet system for seating areas</b> Air channel with nozzles and Piezo-switch	A 3 593 120	<b>1.857,-</b>
<b>Blower, 0,85 kW, 230 V</b> for private and public use, incl. rubber-metal feet, incl. switch box for piezo switch 230V with contactor up to 2 kW (6-10 A)	B 3 583 205	<b>1.340,-</b>

Sales Prices in Euro excl. VAT

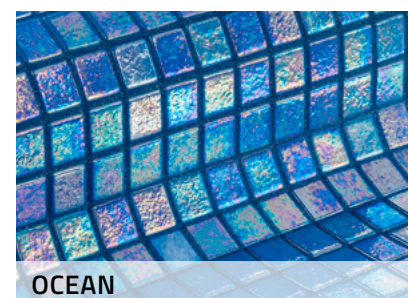
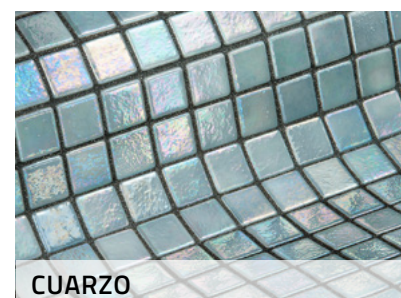
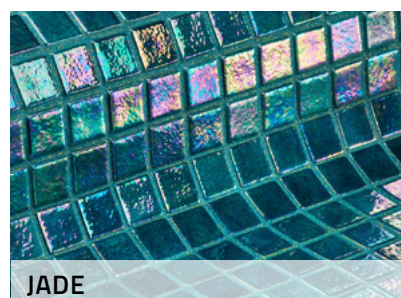
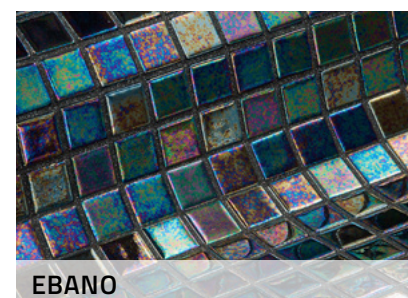


## GLASS MOSAIC

Glass mosaic on the upper air-water edge: Very chic and easy to clean.

Available for all\* pool models!

\* *not available for pool type Modena.*



Glass mosaic 20 cm high, ABOVE the roller shutter edge

EUR 82,- /r.m

When combining glass mosaic with roller cover, please pay particular attention to the dimensional accuracy of the pool installation. Glass mosaic reduces the width of the pool by 1.5 cm. If the pool is not installed true to size, the roller shutter can be prevented from moving.

## OUR POOLS

### Installation costs

Prices for on-site installation and the required installation material are not included in this price list, as these services are realised by a specialised company and invoiced separately.

### Transportation costs

Specified prices are generally **ex-works**. Shipping and insurance to the limit of the receiver's site accessible to road traffic are included in the transportation costs. Special costs, such as rail transport loading, ferries, etc., are borne by the customer.

Transportation to the site should be organised on site and is also borne by the customer

### Pricing

Prices in this list only apply to orders received by us up to the 31<sup>st</sup> of December 2021. We also guarantee price stability for 4 months after confirmation of order. The listed price valid on the day of delivery is invoiced if the goods are collected later.

### Styles of Swimming Pools

**Standard** - hard foam insulation 3 cm in the floor, foam struts in the side walls, pool body in all colour combinations and also with colour-contrasting steps, with complete equipment package or cut-out set for your built-in parts and also available with Integra roller shutter cover.

**Classic** - pool with the same equipment options as „Standard“, but fully insulated with PU foam 3 cm in the floor and 2 cm in the walls.

## TRANSPORT



Our special trucks are equipped with cranes for loading and unloading the swimming pools. The radius they can reach is between 10 m and 13,7 m with max. 1000 kg weight; depending on the vehicle.

Unloading of the swimming pool next to the truck is always possible. Unloading of the swimming pool directly into the prepared area might be difficult sometimes due to various reasons.

In such cases a locally ordered crane has to do the job. Please do not hesitate and discuss details with our despatch department before delivery. If necessary our driver will visit the building site to check the possibilities.

### TRANSPORT

all  
pool types

Transport outside Germany, Benelux, Switzerland and Austria

on request

Insertion of the pool with an on-board crane, if possible

FKra001

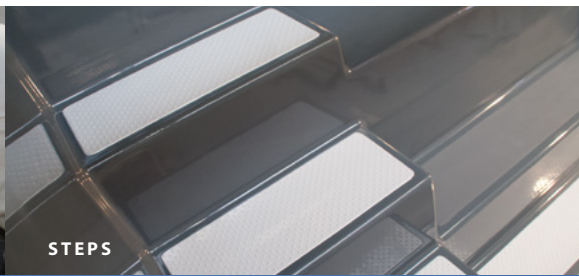
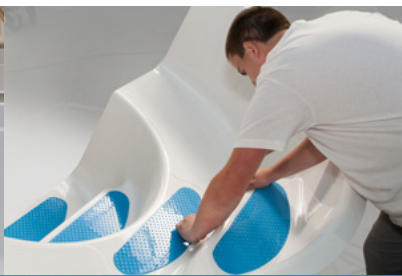
239,-

Sales Prices in Euro excl. VAT





PREFAB POOLS



STEPS

FROM A GOOD FAMILY



Valid from 01.01.2021–31.12.2021 | Stand: 01.01.2021

[www.reku.sk](http://www.reku.sk)

# REKU

Composite-Pools & Elements



REKU - Slovakia spol. s r. o. ■ Priemyselná 10/A ■ SK-917 01 Trnava, Slovakia ■ Tel.: +421 33 551 20 33, +421 33 591 39 11  
E-Mail: [info@reku.sk](mailto:info@reku.sk) ■ [vertrieb@reku.sk](mailto:vertrieb@reku.sk) ■ [www.reku.sk](http://www.reku.sk)

REKU COMPOSITE-POOLS & ELEMENTS IST EIN UNTERNEHMEN DER **RivieraPool®**-GRUPPE