

COMPOSITE-POOLS



PRICELIST 2020

Sales prices in Euro excl. VAT.

Valid from 01.01. – 31.12.2020

REKU

Composite-Pools

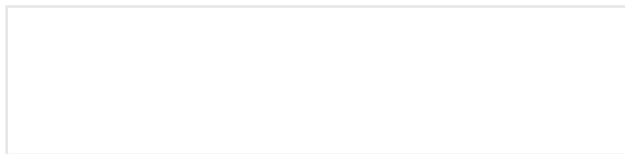


CONTENT

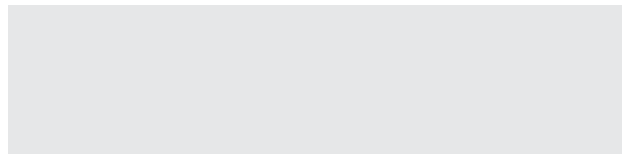
S. 3	Colour Selection
S. 4	Lido
S. 6	Marina
S. 8	Twin
S. 10	Twin „S“
S. 12	Twin „S“ LOUNGE
S. 14	Maris
S. 16	Universal Technical shaft
S. 18	Individual Accessories
S. 19	Accessories Counter Current & Massage Systems
	Individual Accessories for salt water
S. 20	Panel Pool System
S. 21	Our Pools
	Transport



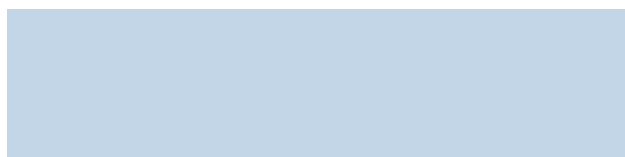
COLOUR & COLOUR COMBINATION



WHITE



PAPYRUS



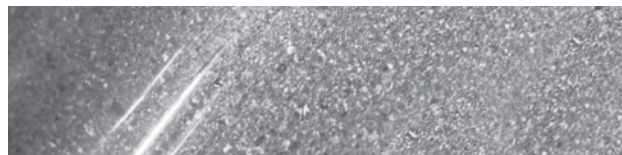
SEA BLUE



SILVER GREY



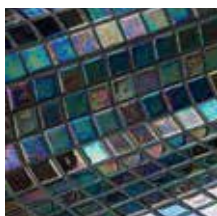
SAND



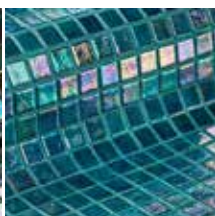
GRANOLITH STONEGREY

MOSAIC BORDER, 20 CM HIGH ABOVE THE ROLLER SHUTTER EDGE

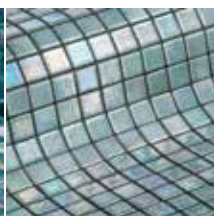
EUR 80,- /rm



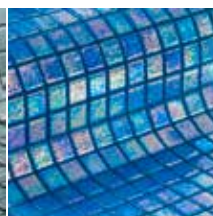
Ebano



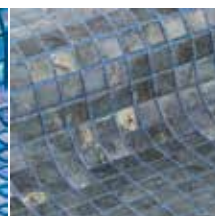
Jade



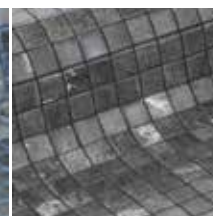
Cuarzo



Ocean



Dolerite



Phyllite

NOTE: When combining mosaic edging with roller cover, please pay particular attention to the dimensional accuracy of the pool installation. Mosaic border reduces the width of the pool by 1.5 cm. If the pool is not installed true to size, the roller shutter can be prevented from moving.

COLOUR COMBINATION

The colour of the steps can be left the same as the main pool or the step tread can be highlighted in an alternative colour to allow safer entry to the pool.

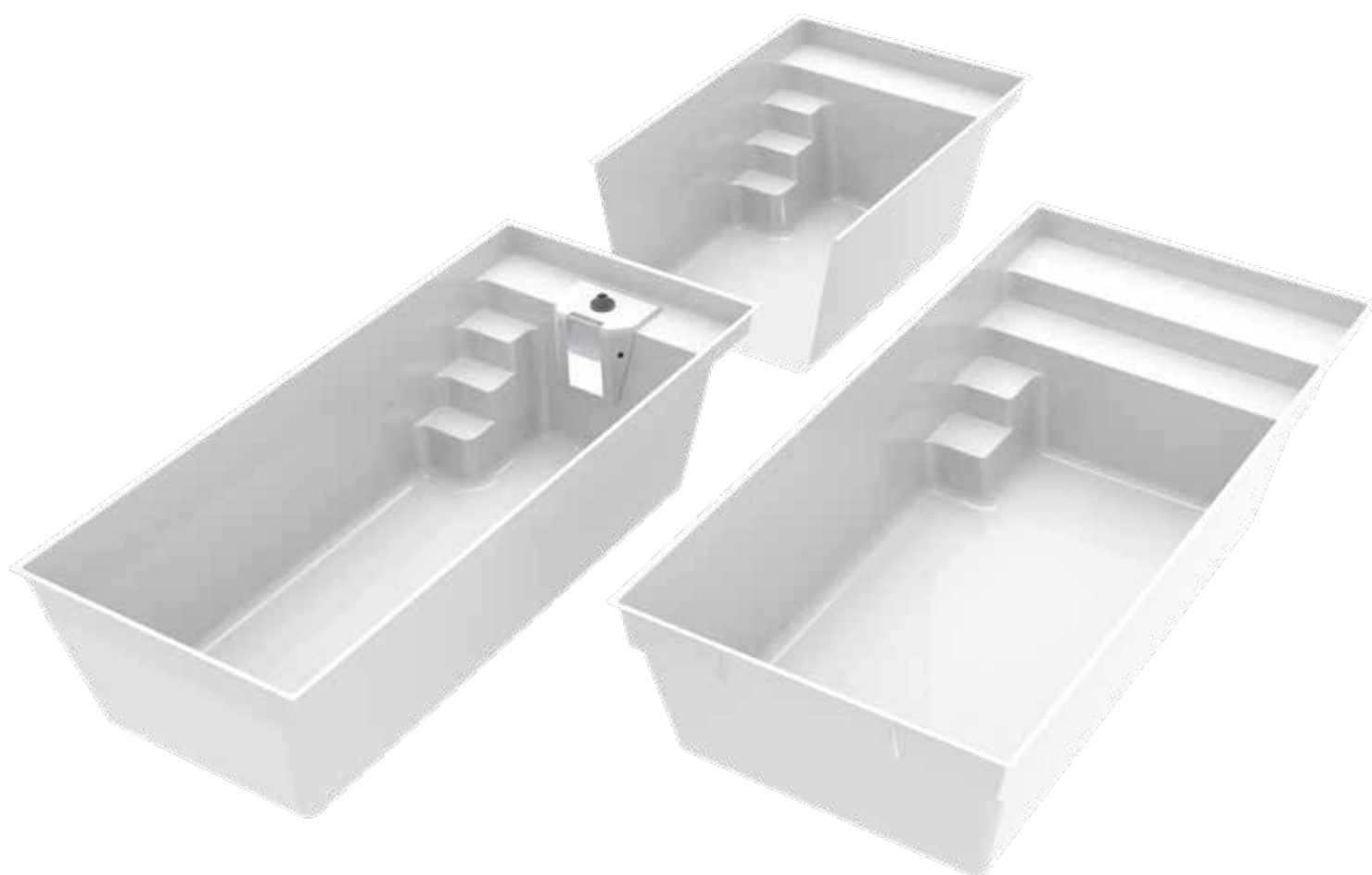
POOL	WHITE	SEA BLUE	SAND	PAPYRUS	SILVER GREY	GRANOLITH
STEPS	white (03) sea blue (01) papyrus (17) sand (11)	sea blue (04) white (02)	sand (13) white (12)	papyrus (19) silver grey (20) white (18)	silver grey (22) papyrus (21) white (24)	granolith (40)

NOTE: Only white and sand are largely resistant to caustic chlorine. Please use other colours with other disinfectants to avoid fading.

LIDO 520/600

One-piece swimming pool made of Epoxy-Acrylate:

4 pool steps with anti-slip profiled surface in the corner. Flat water bench 45 cm wide, with LIDO 600 2-stage, 60 cm and 45 cm wide. Wall slope 10 degree. All-round 5 cm edge for plating over, on the front side at 35 cm height. 2 degree wall slope for installation of skimmers. Pool with 30 mm insulation in the floor.



All pools shown are with equipment package and options. Position of equipment cannot be changed.



POOL TYPE:

LIDO 520
B Lid520ST ..

LIDO 600
B Lid600ST ..

Dimensions in meters

5,20 x 2,30 x 1,40 m

6,00 x 2,80 x 1,40 m

Water content in m³

13

18

Colour: plain papyrus (19)

7.790,-

8.815,-

EQUIPMENT PACKAGE

1 skimmer with water level controller, 2 inlet jets, 1 low level wall suction fitting, 1 bottom outlet sump with cover, 1 underwater light, LED warm white with transformer and plastic connection box

Version Metal

Face plates stainless steel polished (0) or white (1) per set

2.248,-
A 3 540 50

2.248,-
A 3 540 50

Version Plastic

Face plates white (03) or grey (22) per set

1.797,-
A 3 540 60

1.797,-
A 3 540 60

Compact technology

Installation technology for Lido 520

Consisting of:

Receptacle shaft and shaft box

1 cartridge filter and floating skimmer

1 circulating pump 24 V

1 inlet nozzle

1 underwater spotlight LED, colour RGB with remote control

3.095,-
Z TTL520 01

--

The above equipment package is not applicable!

HANDRAIL Marina

Stainless steel, polished, per piece

426,-
A 2 303 10

426,-
A 2 303 10

COPING STONES granite grey

50 x 35 x 4 cm

1.492,-
A 3 022 106

1.690,-
A 3 022 106

ROLLER COVER

Safety cover with rewind gear Incl. hand crank and drive pin.

Colour: grey (RAL 7037)

1.643,-
RS Lid520 22 .

1.796,-
RS Lid600 22

BOTTOM CLEANER electric

with submersible pump and telescopic rod

Connection for 230V/350W

712,-
CS600060010

712,-
CS600060010



FREIGHT CHARGES

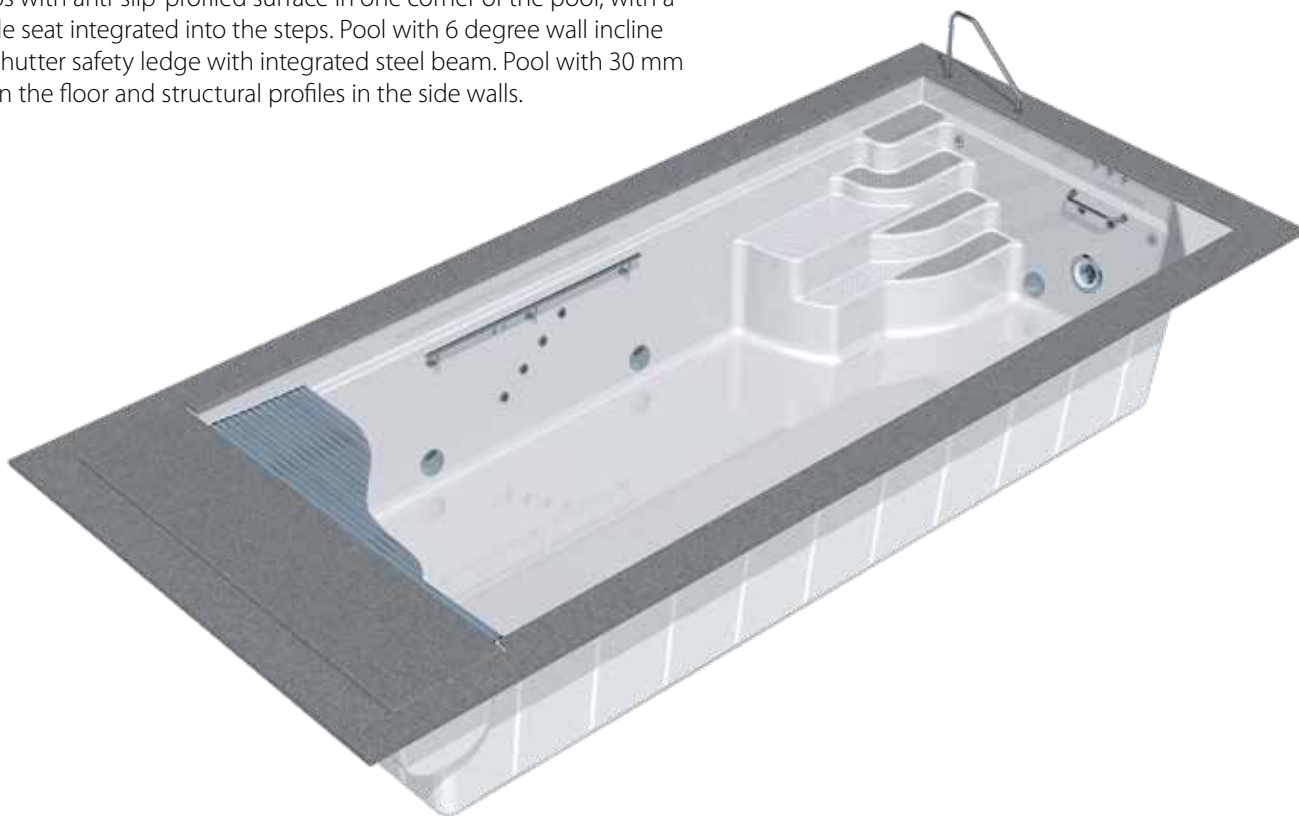
Insertion of the pool with an on-board crane, if possible

on request
FKra001 **235,-**

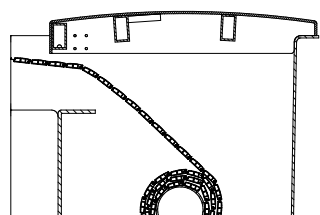
MARINA 600/900

One-piece pool made of Epoxy-Acrylate

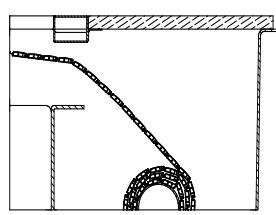
4 pool steps with anti-slip-profiled surface in one corner of the pool, with a comfortable seat integrated into the steps. Pool with 6 degree wall incline and roller shutter safety ledge with integrated steel beam. Pool with 30 mm insulation in the floor and structural profiles in the side walls.



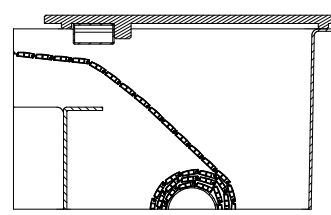
INTEGRA 1-03



Integra 1-03 with cover made of GRP including stone textured finish



Integra 1-03 with stainless steel lintel beam STONE. Capstones on site!



Integra 1-03 with noble wood sun deck

All pools shown are with equipment package and options.
Position of equipment cannot be changed.



POOL TYPE:

MARINA 600 B Mai600ST ..

MARINA 900 B Mai900ST ..

Dimensions in meters	6,00 x 3,20 x 1,40 m	9,00 x 3,20 x 1,40 m
Water content in m³	21	33
Colours: white (03)	9.200,-	11.330,-
sea blue (04), sand (13), papyrus (19) and silver grey (22)	9.475,-	11.670,-
Steps in a different colour (see page 3)	215,-	215,-
Version „CLASSIC“ Extra charge for 2 cm insulation of the side walls	1.795,- B Mai600CL ..	2.550,- B Mai900CL ..

EQUIPMENT PACKAGE

1 skimmer with water level controller, 2 inlet jets, 1 low level wall suction fitting, 1 bottom outlet sump with cover, 1 underwater light, LED warm white with transformer and plastic connection box

Version Metal Face plates stainless steel polished (0) or white (1) per set	2.248,- A 3 540 50.	2.248,- A 3 540 50.
Version Plastic Face plates white (03) or grey (22) per set	1.797,- A 3 540 60.	1.797,- A 3 540 60.

HANDRAIL Marina Stainless steel, polished, per piece	426,- A 2 303 10.	426,- A 2 303 10.
COPING STONES granite grey 50 x 35 x 4 cm	1.492,- A 3 022 106	1.884,- A 3 022 106

ROLLER SHUTTER COVER INTEGRA 1-03

Roller shutter shaft integrated in the pool, with front panel in pool color, with internal gear motor and stainless steel wall fixings, factory-installed; incl. control box and key switch.

SHAFT COVER MADE OF GRP

including stone textured finish and weighted pipe cover tensioner. Available in the same colours as the swimming pools.

SHAFT COVER „STONE“

Stainless steel lintel beam of 120 x 80 x 4 mm, with support edge for cover plates, 40 mm thick, mounted on the pool edge. Capstones on site

SHAFT COVER WOOD SUN DECK

Roller shutter cover of 25 mm thick high-grade wood with contoured surface, stainless steel lintel beam and weighted pipe cover tensioner with 4 straps.

ROLLER SHUTTER COVER made of hollow chamber profiles, 6 cm, cast waterproof with end plugs

Version PVC grey	1.883,- A 01-0302332	2.550,- A 01-0302334
Version PVC solar	2.752,- A 01-0202332	3.983,- A 01-0202334
Version Polycarbonate solar	3.676,- A 01-0202332	5.311,- A 01-0202334

FREIGHT CHARGES

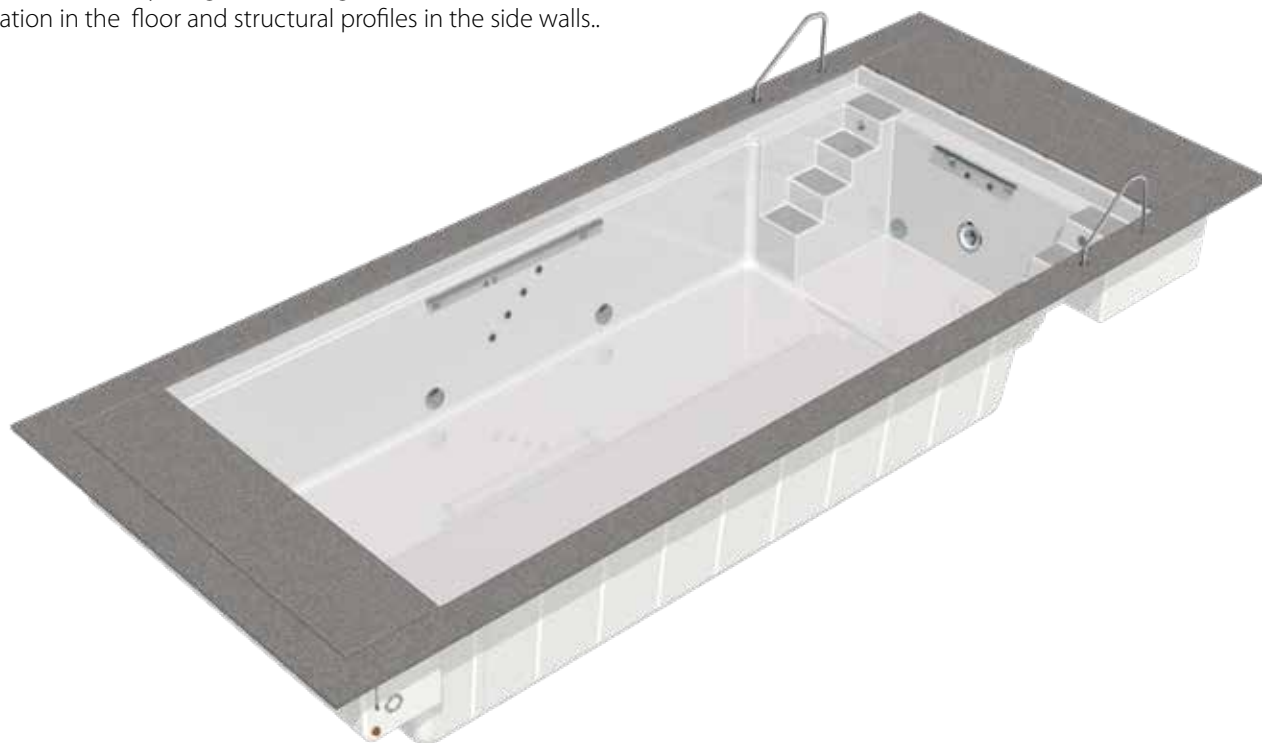
Insertion of the pool with an on-board crane, if possible

on request
FKra001 **235,-**

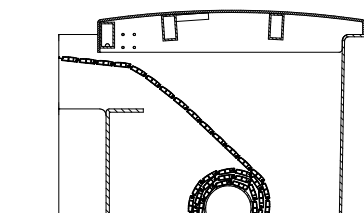
TWIN 700/800/745/845/945

One-piece pool made of Epoxy-Acrylate.

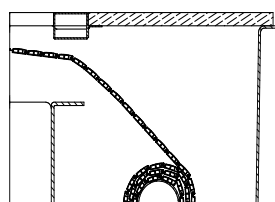
4 pool steps with anti-slip-profiled surface on each side of the pool with a generous central seating area allowing the installation of a counter-current unit and massage jets to the back wall. Pool with 6 degree wall incline and roller shutter safety ledge with integrated steel beam. Pool with 30 mm insulation in the floor and structural profiles in the side walls..



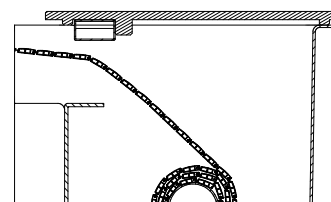
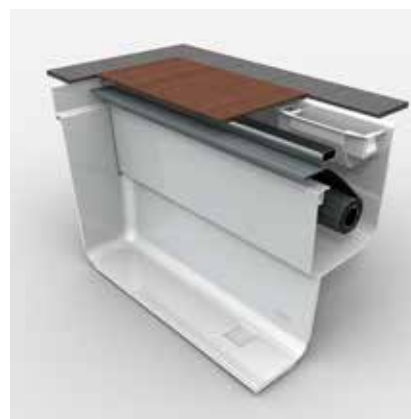
INTEGRA 3-19



Integra 3-19 with cover made of GRP including stone textured finish



Integra 3-19 with stainless steel lintel beam STONE. Capstones on site!



Integra 3-19 with noble wood sun deck

All pools shown are with equipment package and options. Position of equipment cannot be changed.



POOL TYPE:

	TWIN 700 B Twi700ST ..	TWIN 800 B Twi800ST ..	TWIN 745 B Twi745ST ..	TWIN 845 B Twi845ST ..	TWIN 945 B Twi945ST ..
Dimensions in meters	7,00 x 3,20 x 1,50	8,00 x 3,20 x 1,50	7,45 x 3,70 x 1,50	8,45 x 3,70 x 1,50	9,45 x 3,70 x 1,50
Water content in m³	26	31	34	39	44
Colours: white (03)	10.085,-	10.795,-	14.805,-	15.605,-	16.405,-
sea blue (04), sand (13), papyrus (19) and silver grey (22)	10.390,-	11.120,-	15.250,-	16.075,-	16.900,-
granolith stonegrey (40)	11.900,-	12.740,-	17.470,-	18.415,-	19.360,-
Steps in a different colour (see page 3)	215,-	215,-	269,-	269,-	269,-
Version „CLASSIC“	1.850,-	2.095,-	2.095,-	2.395,-	2.695,-
Extra charge for 2 cm insulation of the side walls	B Twi700CL ..	B Twi800CL ..	B Twi745CL ..	B Twi845CL ..	B Twi945CL ..
MOSAIC BORDER 20 cm high above the roller shutter edge (see page 3)	1.632,-	1.792,-	1.784,-	1.944,-	2.104,-

EQUIPMENT PACKAGE

1 skimmer with water level controller, 2 inlet jets, 1 low level wall suction fitting, 1 bottom outlet sump with cover, 1 underwater light, LED warm white with transformer and plastic connection box

Version Metal Face plates stainless steel polished (0) or white (1) per set	2.248,- A 3 540 50.	2.248,- A 3 540 50.	2.248,- A 3 540 50.	2.248,- A 3 540 50.	2.248,- A 3 540 50.
Version Plastic Face plates white (03) or grey (22) per set	1.797,- A 3 540 60.	1.797,- A 3 540 60.	1.797,- A 3 540 60.	1.797,- A 3 540 60.	1.797,- A 3 540 60.
HANDRAIL Marina Stainless steel, polished, per piece	426,- A 2 303 100	426,- A 2 303 100	426,- A 2 303 100	426,- A 2 303 100	426,- A 2 303 100
EQUIPMENT SHAFT laminated with wood sun deck or GRP cover incl. stone textured finish	3.714,- A 2 322 060	3.714,- A 2 322 060	4.151,- A 2 322 070	4.151,- A 2 322 070	4.151,- A 2 322 070
COPING STONES granite grey 50 x 35 x 4 cm	1.618,- A 3 020 376	1.756,- A 3 020 356	1.817,- A 3 022 306	1.928,- A 3 020 406	2.034,- A 3 022 506

ROLLER SHUTTER COVER INTEGRA 3-19

Roller shutter shaft integrated in the pool, with front panel in pool color, with internal gear motor and stainless steel wall fixings, factory-installed; incl. control box and key switch.

	8.445,- B Twi700.... Int3	8.445,- B Twi800.... Int3	9.029,- B Twi745.... Int3	9.029,- B Twi845.... Int3	9.029,- B Twi945.... Int3
SHAFT COVER MADE OF GRP including stone textured finish and weighted pipe cover tensioner. Available in the same colours as the swimming pools.	1.045,- K Int320DK2 ..	1.045,- K Int320DK2 ..	1.076,- K Int370DK2 ..	1.076,- K Int370DK2 ..	1.076,- K Int370DK2 ..
SHAFT COVER „STONE“ Stainless steel lintel beam of 120 x 80 x 4 mm, with support edge for cover plates, 40 mm thick, mounted on the pool edge. Capstones on site	1.769,- SBZ00560505	1.769,- SBZ00560505	1.962,- SBZ00560502	1.962,- SBZ00560502	1.962,- SBZ00560502
SHAFT COVER WOOD SUN DECK Roller shutter cover of 25 mm thick high-grade wood with contoured surface, stainless steel lintel beam and weighted pipe cover tensioner with 4 straps.	2.433,- A 3 938 041	2.433,- A 3 938 041	2.887,- A 3 938 040	2.887,- A 3 938 040	2.887,- A 3 938 040

ROLLER SHUTTER COVER made of hollow chamber profiles, 6 cm, cast waterproof with end plugs

Version PVC grey	2.015,- A 01-0302232	2.279,- A 01-0302233	2.683,- A 01-0303232	2.976,- A 01-0303233	3.282,- A 01-0303234
Version PVC solar	3.105,- A 01-0202232	3.480,- A 01-0202233	4.087,- A 01-0203232	4.561,- A 01-0203233	5.031,- A 01-0203234
Version Polycarbonate solar	4.100,- A 01-0402232	4.656,- A 01-0402233	5.452,- A 01-0403232	6.085,- A 01-0403233	6.706,- A 01-0403234

FREIGHT CHARGES

Insertion of the pool with an on-board crane, if possible

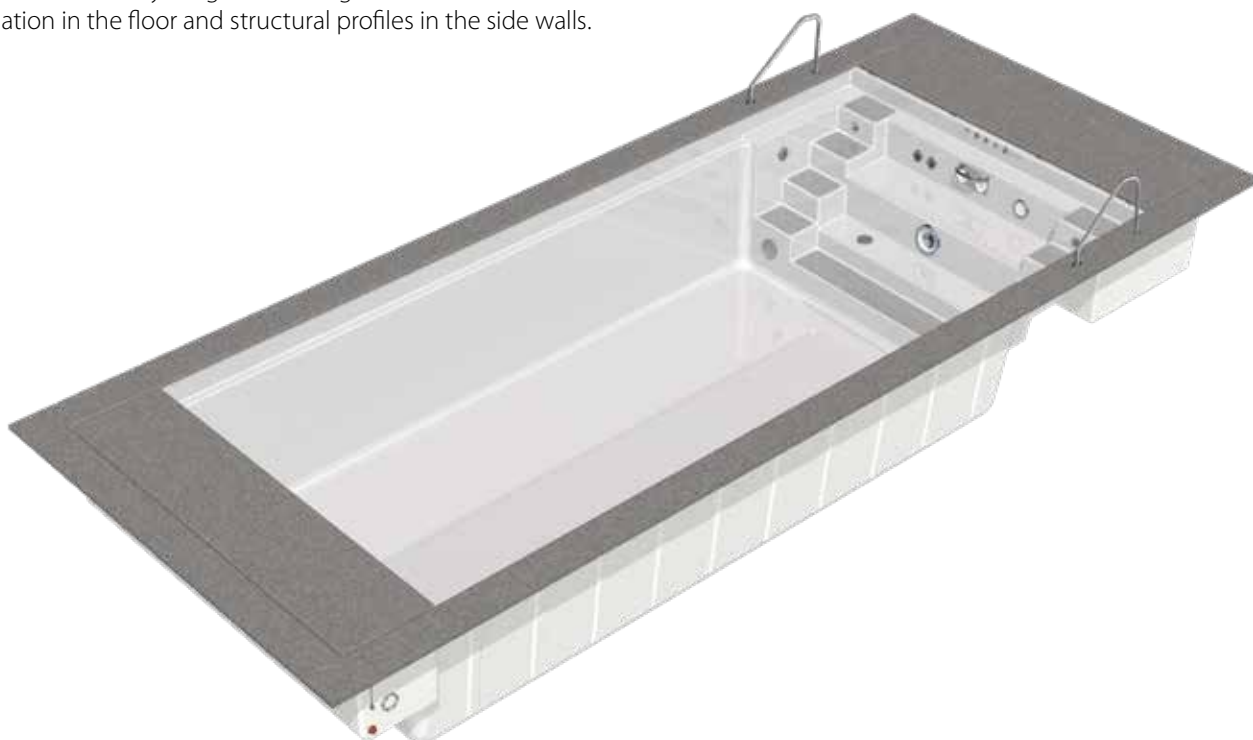
on request

FKra001 **235,-**

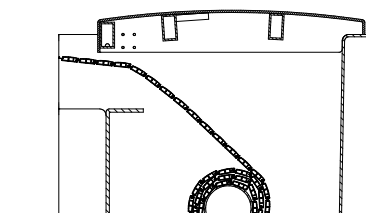
TWIN „S“ 700/800/745/845/945

One-piece swimming pool made of Epoxy-Acrylate

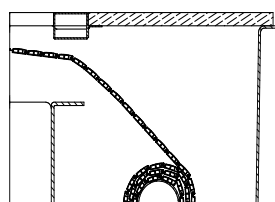
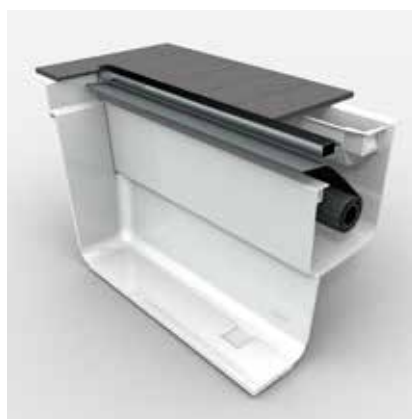
5 pool steps with anti-slip-profiled surface on each side of the pool with a generous central seating area allowing the installation of a counter-current unit and massage jets to the back wall. Pool with 6 degree wall incline and roller shutter safety ledge with integrated steel beam. Pool with 30 mm insulation in the floor and structural profiles in the side walls.



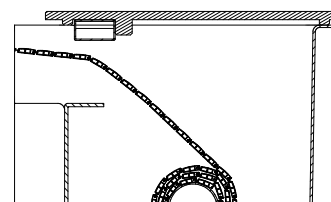
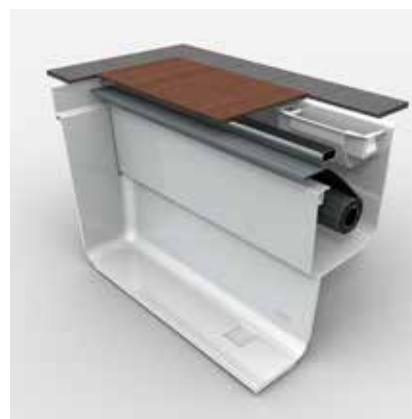
INTEGRA 3-19



Integra 3-19 with cover made of GRP including stone textured finish



Integra 3-19 with stainless steel lintel beam STONE. Capstones on site!



Integra 3-19 with noble wood sun deck

All pools shown are with equipment package and options. Position of equipment cannot be changed.



BECKENTYP:

TWIN „S“ 700 **TWIN „S“ 800** **TWIN „S“ 745** **TWIN „S“ 845** **TWIN „S“ 945**
 B TwiS320ST .. B TwiS800ST .. B TwiS745ST .. B TwiS845ST .. B TwiS945ST ..

Dimensions in meters	7,00 x 3,20 x 1,50	8,00 x 3,20 x 1,50	7,45 x 3,70 x 1,50	8,45 x 3,70 x 1,50	9,45 x 3,70 x 1,50
Water content in m³	25	30	32	37	42
Colours: white (03)	10.425,-	11.135,-	15.145,-	15.945,-	16.745,-
sea blue (04), sand (13), papyrus (19) and silver grey (22)	10.735,-	11.470,-	15.600,-	16.420,-	17.240,-
granolith stonegrey (40)	12.300,-	13.140,-	17.870,-	18.815,-	19.760,-
Steps in a different colour (see page 3)	215,-	215,-	269,-	269,-	269,-
Version „CLASSIC“	1.850,-	2.095,-	2.095,-	2.395,-	2.695,-
Extra charge for 2 cm insulation of the side walls	B TwiS320CL ..	B TwiS800CL ..	B TwiS745CL ..	B TwiS845CL ..	B TwiS945CL ..
MOSAIC BORDER 20 cm high above the roller shutter edge (see page 3)	1.632,-	1.792,-	1.784,-	1.944,-	2.104,-

EQUIPMENT PACKAGE

1 skimmer with water level controller, 2 inlet jets, 1 low level wall suction fitting, 1 bottom outlet sump with cover, 1 underwater light, LED warm white with transformer and plastic connection box

Version Metal Face plates stainless steel polished (0) or white (1) per set	2.248,- A 3 540 50.	2.248,- A 3 540 50.	2.248,- A 3 540 50.	2.248,- A 3 540 50.	2.248,- A 3 540 50.
Version Plastic Face plates white (03) or grey (22), per Set	1.797,- A 3 540 60.	1.797,- A 3 540 60.	1.797,- A 3 540 60.	1.797,- A 3 540 60.	1.797,- A 3 540 60.
HANDRAIL Marina Stainless steel, polished, per piece	426,- A 2 303 100	426,- A 2 303 100	426,- A 2 303 100	426,- A 2 303 100	426,- A 2 303 100
EQUIPMENT SHAFT laminated with wood sun deck or GRP cover incl. stone textured finish	3.714,- A 2 322 060	3.714,- A 2 322 060	4.151,- A 2 322 070	4.151,- A 2 322 070	4.151,- A 2 322 070
COPING STONES granite grey 50 x 35 x 4 cm	1.618,- A 3 020 376	1.756,- A 3 020 356	1.817,- A 3 022 306	1.928,- A 3 020 406	2.034,- A 3 022 506

ROLLER SHUTTER INTEGRA 3-19

Roller shutter shaft integrated in the pool, with front panel in pool color, with internal gear motor and stainless steel wall fixings, factory-installed; incl. control box and key switch.

8.445,- B Twi700.... Int3	8.445,- B Twi800.... Int3	9.029,- B Twi745.... Int3	9.029,- B Twi845.... Int3	9.029,- B Twi945.... Int3
-------------------------------------	-------------------------------------	-------------------------------------	-------------------------------------	-------------------------------------

SHAFT COVER MADE OF GRP

including stone textured finish and weighted pipe cover tensioner. Available in the same colours as the swimming pools.

1.045,- K Int320DK2 ..	1.045,- K Int320DK2 ..	1.076,- K Int370DK2 ..	1.076,- K Int370DK2 ..	1.076,- K Int370DK2 ..
----------------------------------	----------------------------------	----------------------------------	----------------------------------	----------------------------------

SHAFT COVER „STONE“

Stainless steel lintel beam of 120 x 80 x 4 mm, with support edge for cover plates, 40 mm thick, mounted on the pool edge. Capstones on site

1.769,- SBZ00560505	1.769,- SBZ00560505	1.962,- SBZ00560502	1.962,- SBZ00560502	1.962,- SBZ00560502
-------------------------------	-------------------------------	-------------------------------	-------------------------------	-------------------------------

SHAFT COVER WOOD SUNDECK

Roller shutter cover of 25 mm thick high-grade wood with contoured surface, stainless steel lintel beam and weighted pipe cover tensioner with 4 straps

2.433,- A 3 938 041	2.433,- A 3 938 041	2.887,- A 3 938 040	2.887,- A 3 938 040	2.887,- A 3 938 040
-------------------------------	-------------------------------	-------------------------------	-------------------------------	-------------------------------

ROLLER SHUTTER COVER made of hollow chamber profiles, 6 cm, cast waterproof with end plugs

Version PVC grey	2.015,- A 01-0302232	2.279,- A 01-0302233	2.683,- A 01-0303232	2.976,- A 01-0203233	3.282,- A 01-0203234
Version PVC solar	3.105,- A 01-0202232	3.480,- A 01-0202233	4.087,- A 01-0203232	4.561,- A 01-0203233	5.031,- A 01-0203234
Version Polycarbonate solar	4.100,- A 01-0402232	4.656,- A 01-0402233	5.452,- A 01-0403232	6.085,- A 01-0403233	6.706,- A 01-0403234

FREIGHT CHARGES

Insertion of the pool with an on-board crane, if possible

on request
FKra001 **235,-**

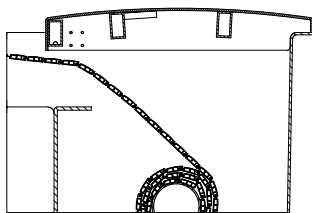
TWIN „S“ 750/850 LOUNGE

One-piece swimming pool made of Epoxy-Acrylate

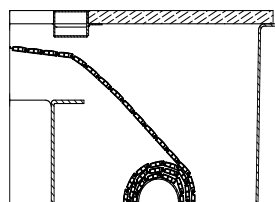
5 pool steps with anti-slip-profiled surface on each side of the pool with a generous central seating area allowing the installation of a counter-current unit and massage jets to the back wall. Pool with 6 degree wall incline and roller shutter safety ledge with integrated steel beam. Pool with 30 mm insulation in the floor and structural profiles in the side walls..



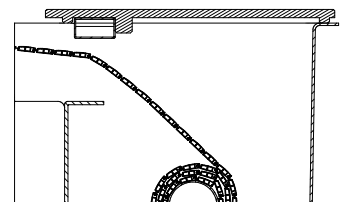
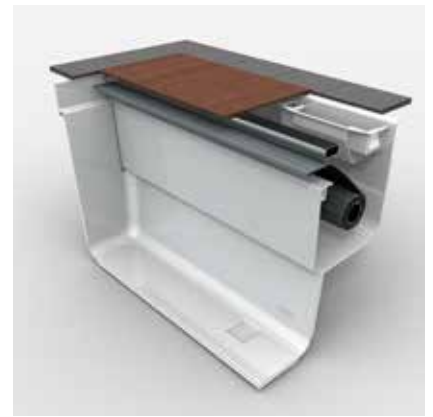
INTEGRA 3-19



Integra 3-19 with cover made of GRP including stone textured finish



Integra 3-19 with stainless steel lintel beam STONE. Capstones on site!



Integra 3-19 with noble wood sun deck

All pools shown are with equipment package and options. Position of equipment cannot be changed.



POOL TYPE:

TWIN „S“ 750 LOUNGE B TwiS750 LX ..

TWIN „S“ 850 LOUNGE B TwiS850LX ..

Dimensions in meters	7,50 x 3,20 x 1,50	8,50 x 3,20 x 1,50
Water content in m³	25	30
Colours: white (03)	11.500,-	12.210,-
sea blue (04), sand (13), papyrus (19) and silver grey (22)	11.845,-	12.580,-
granolith stonegrey (40)	13.570,-	14.410,-
Steps in a different colour (see page 3)	215,-	215,-
Version „CLASSIC“ Extra charge for 2 cm insulation of the side walls	1.850,- B TwiS750CX ..	2.095,- B TwiS850CX ..
MOSAIC BORDER 20 cm high above the roller shutter edge (see page 3)	1.712,-	1.872,-

EQUIPMENT PACKAGE

1 skimmer with water level controller, 2 inlet jets, 1 low level wall suction fitting, 1 bottom outlet sump with cover, 1 underwater light, LED warm white with transformer and plastic connection box

Version Metal Face plates stainless steel polished (0) or white (1) per set	2.506,- A 3 540 55.	2.506,- A 3 540 55.
Version Plastic Face plates white (03) or grey (22) per set	1.870,- A 3 540 65.	1.870,- A 3 540 65.
HANDRAIL Marina Stainless steel, polished, per piece	426,- A 2 303 100	426,- A 2 303 100
EQUIPMENT SHAFT laminated with wood sun deck or GRP cover incl. stone textured finish	3.713,- A 2 322 060	3.713,- A 2 322 060
COPING STONES granite grey 50 x 35 x 4 cm	1.618,- A 3 020 376	1.756,- A 3 020 306

ROLLER SHUTTER INTEGRA 3-19

Roller shutter shaft integrated in the pool, with front panel in pool color, with internal gear motor and stainless steel wall fixings, factory-installed; incl. control box and key switch.

8.445,- B TwiS750.... Int3	8.445,- B TwiS850.... Int3
--------------------------------------	--------------------------------------

SHAFT COVER MADE OF GRP

including stone textured finish and weighted pipe cover tensioner. Available in the same colours as the swimming pools.

1.045,- K Int320DK2 ..	1.045,- K Int320DK2 ..
----------------------------------	----------------------------------

SHAFT COVER „STONE“

Stainless steel lintel beam of 120 x 80 x 4 mm, with support edge for cover plates, 40 mm thick, mounted on the pool edge. Capstones on site

1.769,- SBZ00560505	1.769,- SBZ00560505
-------------------------------	-------------------------------

SHAFT COVER WOOD SUN DECK

Roller shutter cover of 25 mm thick high-grade wood with contoured surface, stainless steel lintel beam and weighted pipe cover tensioner with 4 straps.

2.433,- A 3 938 041	2.433,- A 3 938 041
-------------------------------	-------------------------------

ROLLER SHUTTER COVER made of hollow chamber profiles, 6 cm, cast waterproof with end plugs

Version PVC grey	2.284,- A 01-0302235	2.478,- A 01-0302236
Version PVC solar	3.263,- A 01-0202235	3.703,- A 01-0202236
Version Polycarbonate solar	4.348,- A 01-0402235	4.959,- A 01-0402236

FREIGHT CHARGES

Insertion of the pool with an on-board crane, if possible

on request
FKra001 **235,-**

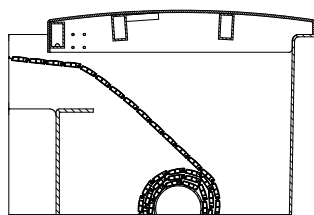
MARIS 650/750/700/800/900

One-piece swimming pool made of Epoxy-Acrylate

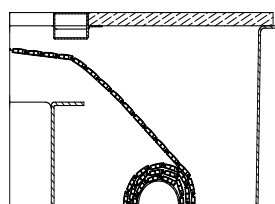
4 pool steps with anti-slip-profiled surface in one corner of the pool, with a comfortable seat integrated into the steps. Surface in the middle, suitable for installation of jetstream. Pool with 6 degree wall incline and roller shutter safety ledge with integrated steel beam. Pool with 30 mm insulation in the floor and structural profiles in the side walls.



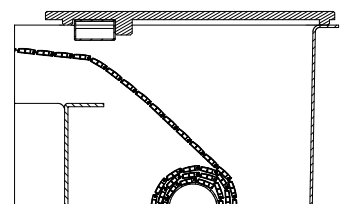
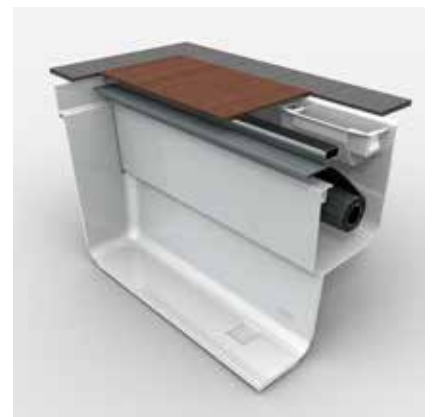
INTEGRA 3-19



Integra 3-19 with cover made of GRP including stone textured finish



Integra 3-19 with stainless steel lintel beam STONE. Capstones on site!



Integra 3-19 with noble wood sun deck

All pools shown are with equipment package and options. Position of equipment cannot be changed.



POOL TYPE:	MARIS 650 B Mar650ST ..	MARIS 750 B Mar750ST ..	MARIS 700 B Mar700ST ..	MARIS 800 B Mar800ST ..	MARIS 900 B Mar900 ST ..
Dimensions in meters	6,50 x 3,20 x 1,50	7,50 x 3,20 x 1,50	7,00 x 3,70 x 1,50	8,00 x 3,70 x 1,50	9,00 x 3,70 x 1,50
Water content in m³	26	31	34	39	44
Colours: white (03)	10.085,-	10.795,-	14.805,-	15.605,-	16.405,-
sea blue (04), sand (13), papyrus (19) and silver grey (22)	10.390,-	11.120,-	15.250,-	16.075,-	16.900,-
granolith stonegrey (40)	11.900,-	12.740,-	17.470,-	18.415,-	19.360,-
Steps in a different colour (see page 3)	215,-	215,-	269,-	269,-	269,-
Version „CLASSIC“ Extra charge for 2 cm insulation of the side walls	1.850,- B Mar650CL ..	2.095,- B Mar750CL ..	2.095,- B Mar700CL ..	2.395,- B Mar800CL ..	2.695,- B Mar900CL ..
MOSAIC BORDER 20 cm high above the roller shutter edge (see page 3)	1.632,-	1.792,-	1.784,-	1.944,-	2.104,-
EQUIPMENT PACKAGE 1 skimmer with water level controller, 2 inlet jets, 1 low level wall suction fitting, 1 bottom outlet sump with cover, 1 underwater light, LED warm white with transformer and plastic connection box					
Version Metal Face plates stainless steel polished (0) or white (1) per set	2.248,- A 3 540 50.	2.248,- A 3 540 50.	2.248,- A 3 540 50.	2.248,- A 3 540 50.	2.248,- A 3 540 50.
Version Plastic Face plates white (03) or grey (22) per set	1.797,- A 3 540 60.	1.797,- A 3 540 60.	1.797,- A 3 540 60.	1.797,- A 3 540 60.	1.797,- A 3 540 60.
HANDRAIL Marina Stainless steel, polished, per piece	426,- A 2 303 100	426,- A 2 303 100	426,- A 2 303 10.	426,- A 2 303 10.	426,- A 2 303 10.
COPING STONES Granite grey 50 x 35 x 4 cm	1.686,- A 3 021 806	1.825,- A 3 020 816	1.825,- A 3 021 856	1.962,- A 3 021 866	2.100,- A 3 021 876
ROLLER SHUTTER INTEGRA 3-19 Roller shutter shaft integrated in the pool, with front panel in pool color, with internal gear motor and stainless steel wall fixings, factory-in- stalled; incl. control box and key switch.					
	8.445,- B Mar650.... Int3	8.445,- B Mar750.... Int3	9.029,- B Mar700.... Int3	9.029,- B Mar800.... Int3	9.029,- B Mar900.... Int3
SHAFT COVER MADE OF GRP including stonetextured finish and weight edpipe cover tensioner. Available in the same colours as the swimmingpools.					
	1.045,- K Int320DK2 ..	1.045,- K Int320DK2 ..	1.076,- K Int370DK2 ..	1.076,- K Int370DK2 ..	1.076,- K Int370DK2 ..
SHAFT COVER „STONE“ Stainless steel lintel beam of 120 x 80 x 4 mm, with support edge for cover plates, 40 mm thick, mounted on the pool edge. Capstones on site					
	1.769,- SBZ00560505	1.769,- SBZ00560505	1.962,- SBZ00560502	1.962,- SBZ00560502	1.962,- SBZ00560502
SHAFT COVER WOOD SUN DECK Roller shutter cover of 25 mm thick high-grade wood with contoured surface, stainless steel lintel beam and weighted pipe cover tensioner with 4 straps.					
	2.433,- A 3 938 041	2.433,- A 3 938 041	2.887,- A 3 938 040	2.887,- A 3 938 040	2.887,- A 3 938 040
ROLLER SHUTTER COVER made of hollow chamber profiles, 6 cm, cast waterproof with end plugs					
Version PVC grey	2.015,- R Mar650 PVCG-T17	2.279,- R Mar750 PVCG-T17	2.683,- R Mar710 PVCG-T17	2.976,- R Mar810 PVCG-T17	3.282,- R Mar910 PVCG-T17
Version PVC solar	3.105,- R Mar650 PVCS-T17	3.480,- R Mar750 PVCS-T17	4.087,- R Mar710 PVCS-T17	4.561,- R Mar810 PVCS-T17	5.031,- R Mar910 PVCS-T17
Version Polycarbonate solar	4.100,- R Mar650 PC-T17	4.656,- R Mar750 PC-T17	5.452,- R Mar710 PC-T17	6.085,- R Mar810 PC-T17	6.706,- R Mar910PC-T17

FREIGHT CHARGES

Insertion of the pool with an on-board crane, if possible

on request

FKra001 **235,-**

TECHNICAL SHAFT

MULTI PURPOSE TECHNICAL SHAFT

The Universal technical shaft fits to REKU Composite pools (open at the bottom). Vent installed with fan and humidistat. The lid is adjustable in height to suit the surrounding copings stones or wooden flooring..

Dimensions (L x W x H): 1,5 x 1,7 x 1,5 m

Dimensions of the cover opening: 1.245 x 765 mm

Drawing available on request!

Price per piece K Uni 150.. **2.992,-**

COVER VERSIONS

(When ordering confirm the cover type and colour required. Covers are papyrus (light grey) as standard. Other colour options are available (see the entry steps price list for options).

1. Lid with anti-slip surface, screwed.

The surface has a „non-slip certificate“ for wet areas.
Opened with 2 gas struts & 2 handles.

2. Also suitable for wooden decking (on site application), but not in stone as it is frequently opened.
3. As a shower tray with the anti-slip coating, includes waste and is opened with 2 gas struts and 2 handles

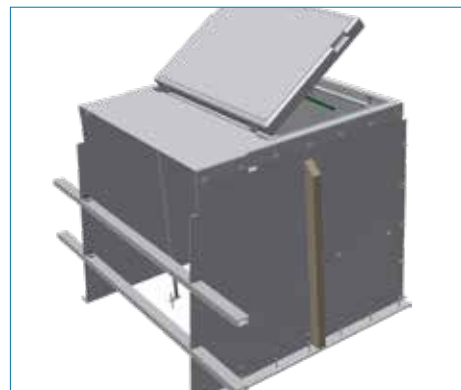
Extra charge for technical shaft matching the colours of covers

(Covers are papyrus (light grey) as standard. Other colour options are available)

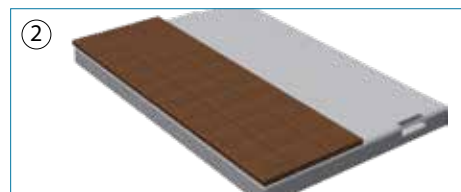
Price per piece: **105,-**

Cover available as a shower tray (BRW)

Price per piece: **110,-**



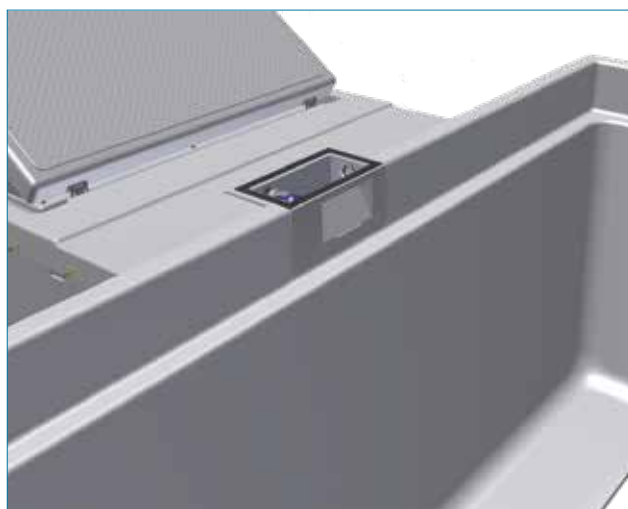
Cover with anti-slip surface (DK)



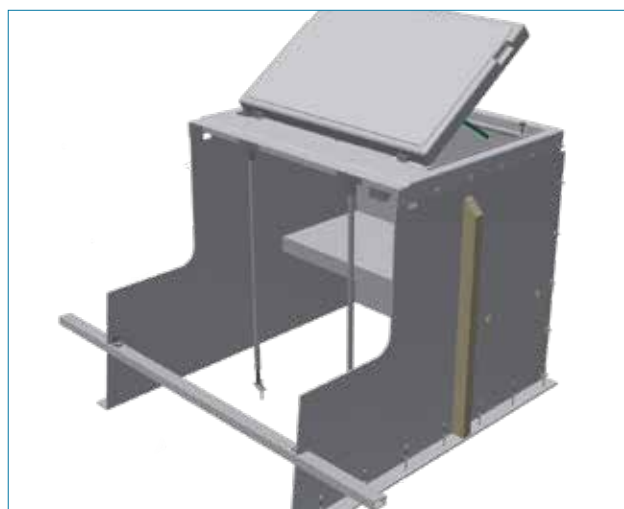
Cover for wooden surface (FLW)



Cover as shower tray (BRW)



GRP - multi purpose technique shaft for swimming pools without roller shutter cover



GRP - multi purpose technique shaft for swimming pools with Integra roller shutter cover.



SHAFT FOR COUNTER SWIM UNITS

To match the Composite pool, with waste drain,
2-4 qty adjustable leg supports for bolting to the concrete slab.
Built in ventilation with fan and humidistat.

SHAFT FOR COUNTER SWIM UNITS, SHORT VERSION:

with cut-outs for roller shutter safety ledge, incl. 2 adjustable leg supports

Dimensions (L x W x H): 1.520 x 1.100 x 751 mm

Dimensions of the cover opening: 765 x 745 mm (see figure 1)

Drawing available on request!

Price per piece KUni100GSA..K **1.538,-**

SHAFT FOR COUNTER SWIM UNITS, LONG VERSION:

with cut-outs** for step-ends, incl. 4 adjustable leg supports

Dimensions (L x W x H): 2015 x 1100 x 751 mm

Dimensions of the cover opening: 765 x 745 mm (see figure 2)

Drawing available on request!

Price per piece KUni100GSA..L **1.976,-**

COVER VERSIONS:

(When ordering confirm the cover type and colour required.

Covers are papyrus (light grey) as standard.

Other colour options are available (see the entry steps price list for options)

3. Cover with non-slip surface and secured with screws.
Surface has a „non-slip certi cate“ for wet areas..
4. Cover without non-slip, smooth stone or wooden decking covering by customer, lid secured by screws.
5. As a shower tray with non-slip surface including waste drain, 2 hinges , 1 gas strut and 2 handles.

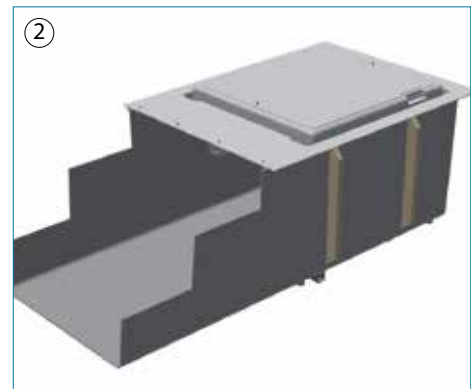
Extra charge for technical shaft matching the colours of covers

(Covers are papyrus (light grey) as standard. Other colour options are available)

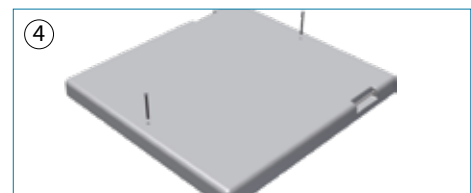
Price per piece: **91,-**

Cover available as a shower tray (BRW)

Price per piece: **96,-**



Cover with anti-slip surface (DK)



Cover for wooden surface (FLW)



Cover as shower tray (BRW)

****The cut-outs for shafts (long version) are prepared according to the step-end in the factory**

Sales prices in Euro excl. VAT.

INDIVIDUAL ACCESSORIES

Skimmer GFK/V4A laminated to the shell with water level regulation and security overflow and skimmer basket, white (60), polished (70) in poolcolour	A 3 503 015	739,-
Skimmer INTEGRA made from GRP installed in roller shutter shaft, security overflow d 40 mm, suction plug 2", mechanical level regulator, installed in roller shutter shaft	A 3 916 070	739,-
Eyeball inlet Ø 4 x 8 mm, stainless steel polished	B 3510530	130,-
Ø 4 x 8 mm, white	B 3510531	142,-
LED underwater lights (standard feature)		
Niche of GRP laminated, - for installation under the stairs	A SBZ00370300	357,-
- for installation in the wall	A SBZ00370550	357,-
Stainless steel niche f. underwater light, PLA-100 / PLA-170 incl. joint and installation material	A SBZ00370400	357,-
Niche of red brass with stud bolt and flange and adapter (for Ø 170 in the side wall)	L A 4 101 060	357,-
LED underwater light, 45 W, warm white, Ø 170 mm, with stainless steel faceplate	A 3 531 400	294,-
LED underwater light, 40 W, RGB, Ø 170 mm, with stainless steel faceplate	A 3 531 410	420,-
LED underwater light, 7 W, warm white, Ø 100 mm, with stainless steel faceplate	A 3 531 440	172,-
LED underwater light, 6 W, RGB, Ø 100 mm, with stainless steel faceplate	A 3 531 450	248,-
Underwater light 300 W/12 V in laminated GRP niche Front cover white (01):	A 3 531 001	469,-
Front cover steel polished (00)	A 3 531 000	560,-
Transformer in accordance to VDE 0551, IP 64, Iso. Kl. E		
Modell 50 VA (1 x 50 W)	B 3 539 008	130,-
Modell 100 VA (2 x 50 W)	B 3 539 009	172,-
Modell 150 VA (3 x 50 W)	B 3 539 011	189,-
Modell 300 VA (1 x 300 od. 4 x 75 W)	B 3 539 010	214,-
Modell 600 VA (2 x 300 W)	B 3 539 020	269,-
Control box (192 W) with remote control and DMX protocol (for 1-4 UWS-RGB) for changing light colours, dimmer and various colour effects, memory function, control panel with wall bracket (remote control not waterproof)	A 3 531 480	643,-
Control box 480 W control box with remote control and DMX protocol (for 1-8 UWS-RGB) for changing light colours, dimmer and various colour effects, memory function, control panel with wall bracket (remote control not waterproof)	A 3 531 490	849,-
Elbow for drain, red brass, R 1 1/2"	B 3 510 000	160,-
Anti-swirl cover for drain white, for drain	B 3 511 001	122,-
stainless steel polished	B 3 512 000	122,-
Wall low level suction BK 2" stainless steel polished	B 4 230 250	303,-
white	B 4 230 251	303,-

Necessary cut-outs for equipment package are included in the price of the equipment set!



ADDITIONAL EQUIPMENT, WHIRL- AND MASSAGE SYSTEMS:

Royal Twinjet 800B	B 3 580 167	2.462,-
System with 2 jets , Qges. ca. 38 m³/h		
Safety suction fittings incl. valve to be installed inside the roller shutter cover		
Safety suction fittings	B 3 580 165	3.197,-
according to DIN EN 16 713 to be installed in the poolarea.		
2 x 2 1/2", suction grille ø 350 mm, Qmax = 52,7 m³/h		
Pump kit 2,2 kW - 400 V, including switch box	B 3 580 194	2.382,-
Royal Twinjet 1000 B	B 3 580 167	2.462,-
System with 2 jets , Qges. ca. 52 m³/h		
Safety suction fittings incl. valve to be installed inside the roller shutter cover		
Safety suction fittings	B 3 580 165	3.197,-
according to DIN EN 16 713 to be installed in the poolarea.		
2 x 2 1/2", suction grille ø 350 mm, Qmax = 52,7 m³/h		
Pump kit 2,6 kW - 400 V, including switch box	B 3 590 194	2.887,-
Air jet system for seating areas	A 3 593 120	1.815,-
Air channel with nozzles and Piezo-switch		
Blower, 0,85 kW, 230 V	B 3 583 205	1.311,-
Suitable for private and commercial use, incl. switch box up to 2 kW (6–10 A)		

INDIVIDUAL ACCESSORIES FOR SALT WATER

Skimmer GRP/GRP		
aminated to the shell with water level regulation and security overflow and skimmer basket, white (60), polished (70)		
Cover made from GRP in pool colour	A 3503015 GfK	721,-
Eyeball inlet		
R 1 1/2", Ø 4x8 mm		
Plastic white (Ocean 03) or grey (Ocean 22)	Ocean.....	83,-
LED underwater lights (standard feature)		
LED underwater light ZM40 , 44 W/12 V, warm white, in GRP-Niche		
Ø 141 mm with plastic faceplate Chroma in white or grey	CCE-300-0139	530,-
LED underwater light ZX30 , 40 W/12 V, RGB + W, in GRP-Niche		
Ø 141 mm with plastic faceplate Chroma in white or grey	CCE-300-0108	596,-
LED underwater light control box A100 RC+ (100 W)	CCE-570-0145	359,-
with remote control for direct changing light colours		
Control of more lights available		
Cable connecting box of plastic	B 3 539 003	43,-
Wall low level suction plastic		
white (30) or grey (09), 2"	L640-36..	97,-
Cut outs for non REKU parts:		
cut out with at milled back for counter swim unit		
(GSA), Skimmer (Ski) or light (Uws), square or round	A ... 001 Boh	179,-
Cut with at milled rear for air venturi regulator (LR),		
floor drain (Ba) or eyeball inlet (Ed) up to incl. d 65 mm	A ... 001 Boh	53,-

PANEL POOL SYSTEM

Designed to allow the flexibility of a liner pool with all the benefits of a GRP one piece pool. The panels are quickly installed onto a concrete base allowing the liner to be fitted and the pool put in to use in a matter of days.

Your pool kit can be delivered on a single pallet with your chosen step end packed on top. The pool panels are optimised to suit the size of the pool, with a maximum panel length of 3 m.

An example:

7 m x 3m pool would have 6 x 3.00 m panels, a 3 m Kanto step end and to complete the pool. The pallet size would be approximately (3.25 m long x 1.5 m wide x 1.1m high and then an additional 2.6 m high for the steps).

The panels are single-walled with reinforcing profiles 50 cm backwards and 1.5 m high. The REKU staircases, the REKU technique shaft for installation of countercurrent systems, underwater lights, as well as complete filters and skimmers, as in the universal shaft, are ideal for the perfect combination.

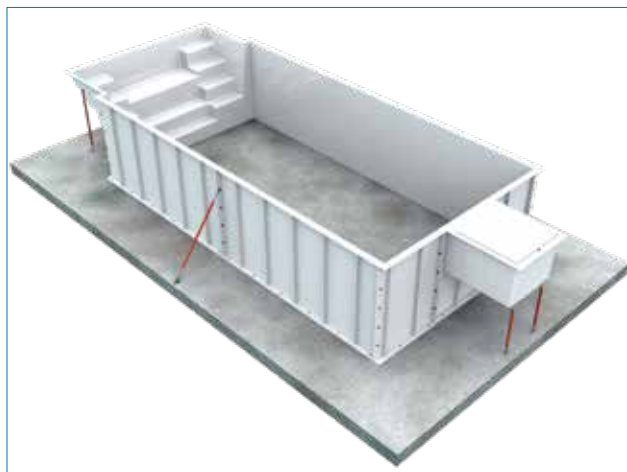
The panel pool is also available for an extra charge in insulated version with 3 cm or 6 cm PU rigid foam insulation.

An adjustable support is supplied with each wall flange, which vertically aligns the panels during installation can adjust.

The swimming pool wall 10 cm flange all around, left and right with flange for screw connection and at the bottom with flange for attachment to the concrete slab made on site. The screwing material is included.

The walls can then have inlets, skimmers and light fixing positions added to them to suit the requirements of your customer or be left blank for your own fittings to be added as required. Drill holes and cutouts can be made at the factory for a surcharge.

The 10 cm top flange is free to fit a liner lock and the coping stones. If required a PVC insert strip can be added to the wall as an option to allow the use of 1,5 mm welded liners.



WALL PANEL FOR SKIMMER POOLS

Single-walled panel with reinforcing profiles(per m)	390,-
Insulated panel with 3 cm PU hard foam (per m)	484,-
Insulated panel with 6 cm PU hard foam (per m)	564,-
Panel with integrated technique shaft, 1 m wide (for instalation of counter-current system or light, 2 PVC fittings for ventilation)	1.013,-
Palette and apakging in PE - film	50,-
Transportation for the whole Pool	474,-

Sales prices in Euro excl. VAT.



OUR POOLS

INSTALLATION COSTS:

Prices for on-site installation and the required installation material are not included in this price list, as these services are realised by a specialised company and invoiced separately.

TRANSPORTATION COSTS:

Specified prices are generally ex-works. Shipping and insurance to the limit of the receiver's site accessible to road traffic are included in the transportation costs. Special costs, such as rail transport loading, ferries, etc., are borne by the customer. Transportation to the site should be organised on site and is also borne by the customer.

PRICING

Prices in this list only apply to orders received by us up to the 31st of December 2020. We also guarantee price stability for 4 months after confirmation of order. The listed price valid on the day of delivery is invoiced if the goods are collected later.

STYLES OF SWIMMING POOL:

STANDARD - hard foam insulation 30 mm in the floor, foam struts in the side walls, pool body in all colour combinations and also with colour-contrasting steps, with complete equipment package or cut-out set for your built-in parts and also available with Integra roller shutter cover.

CLASSIC - pool with the same equipment options as „Standard“, but fully insulated with PU foam 30 mm in the floor and 20 mm in the walls.

TRANSPORT



Our special trucks are equipped with cranes for loading and unloading the swimming pools. The radius they can reach is between 10 m and 13,7 m with max. 1000 kg weight; depending on the vehicle.

Unloading of the swimming pool next to the truck is always possible. Unloading of the swimming pool directly into the prepared area might be difficult sometimes due to various reasons.

In such cases a locally ordered crane has to do the job. Please do not hesitate and discuss details with our despatch department before delivery. If necessary our driver will visit the building site to check the possibilities.

NOTES:



NOTES:

FROM GOOD HOUSE ...



PREFABRICATES SWIMMING POOLS



PANEL POOLS



STEPS



Valid from 01.01.–31.12.2020 | Stand: 01.01.20

www.reku.sk

REKU

Composite-Pools & Elements



REKU - Slovakia spol. r.o. • Priemyselná 10/A • SK-917 01 Trnava, Slovakia • Tel.: +421 33 551 20 33, +421 33 591 39 11
E-Mail: info@reku.sk • vertrieb@reku.sk • www.reku.sk

REKU COMPOSITE-POOLS & ELEMENTS IS A SUBSIDIARY OF THE **RivieraPool®**-GROUP